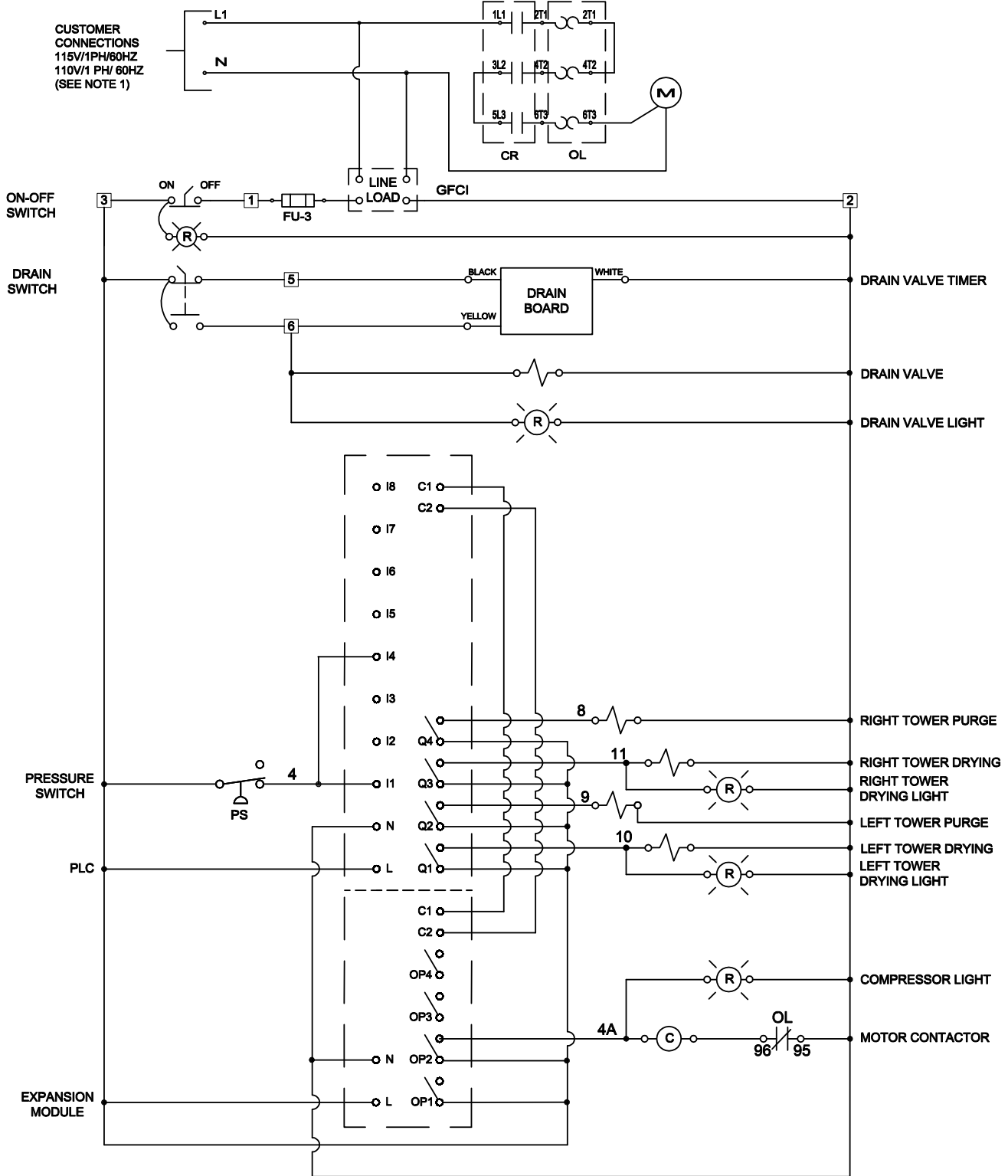


REVISIONS				
ZONE	REV	DESCRIPTION	DATE	APPROVED
	1	DELETED SERVICE LIGHT & PUSHBUTTON	04/26/2016	RM

CUSTOMER CONNECTIONS
115V/1PH/60HZ
110V/1 PH/ 60HZ
(SEE NOTE 1)



NOTES:

- 1) INPUT VOLTAGE IS CONNECTED TO L1 AND (N) NEUTRAL ON THE POWER INPUT BLOCK.
- 2) MOTOR TO BE UNDERWRITERS LABORATORIES RECOGNIZED OR APPROVED.
- 3) FUSE SIZING: PRIMARY FUSE TO BE 500% OF CALCULATED AMPERAGE, SECONDARY FUSE TO BE 167%. CALCULATED AMPERAGE EQUALS THE TRANSFORMER VA DIVIDED BY THE VOLTAGE. REFERENCE UL508 FOR PRIMARY FUSING AND NEC FOR SECONDARY FUSING.

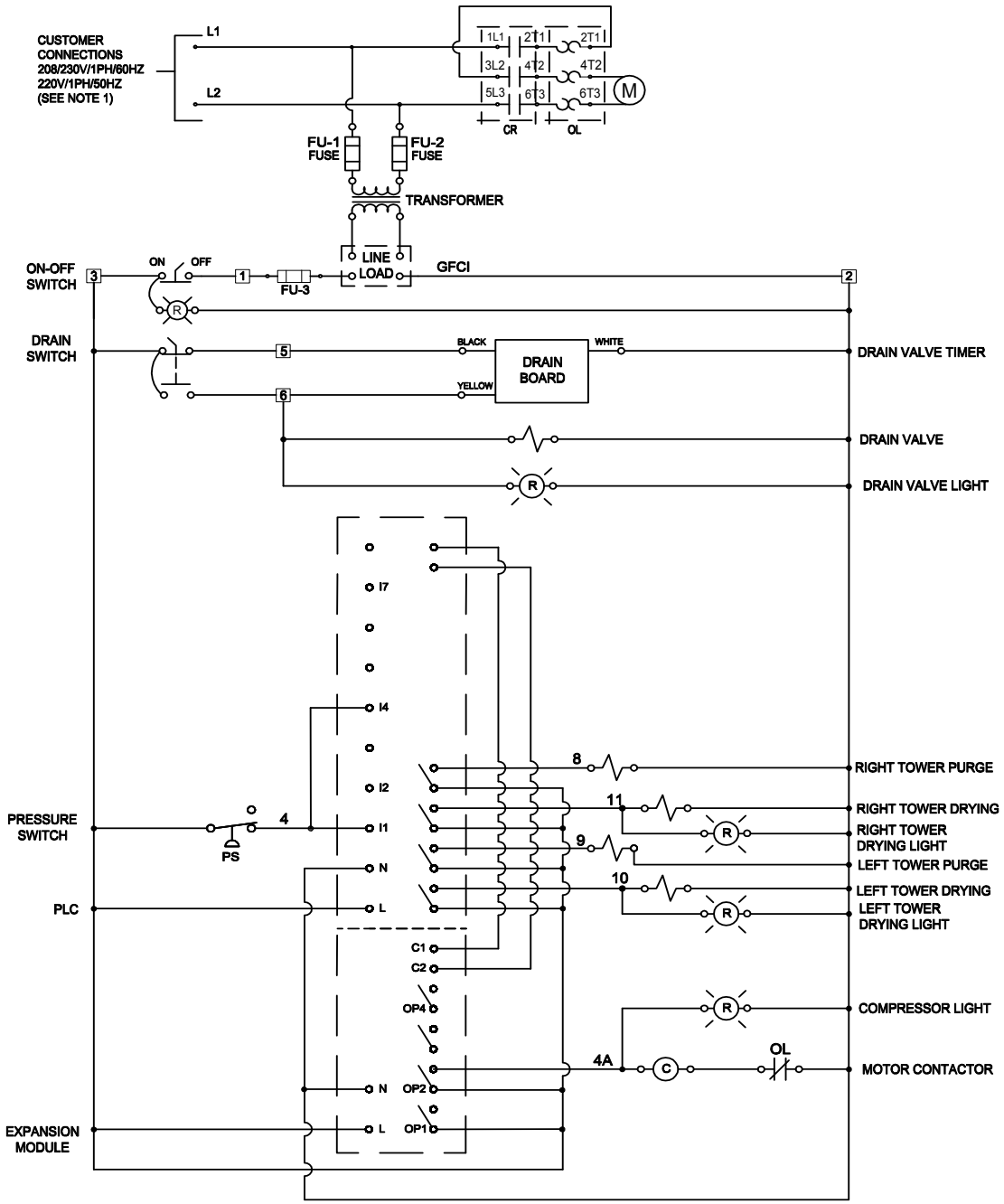
UNLESS OTHERWISE SPECIFIED
DIMENSIONS ARE IN INCHES
TOLERANCES ARE:
FRACTIONS ± 1/4 DECIMALS .XX ± .13 ANGLES ± 1/2°

DAPDRAWINGS/E-215405 REV 1 WIRING DIAGRAM/E-215405 WIRING DIAGRAM DAP
115V/1PH/60Hz OR 110V/1PH/50Hz.DWG



APPROVALS	DATE	TITLE
DRAWN GWS	12/10/15	WIRING DIAGRAM DPA 115V/1PH/60Hz OR 110V/1PH/50Hz WITH PLC OPTION
CHECKED RM	12/10/15	
SCALE NTS	SIZE	
SHEET 1 OF 1	A	DWG NO. E-215405
		REV 1

REVISIONS				
ZONE	REV	DESCRIPTION	DATE	APPROVED



- NOTES:
- 1) INPUT VOLTAGE IS CONNECTED TO L1 AND L2 CONNECTIONS ON THE POWER INPUT BLOCK.
 - 2) TRANSFORMER CONNECTIONS ARE DETERMINED BY SUPPLY VOLTAGE.
 - 3) *63NO, 64NO ON 208/1, 13NO, 14NO ON 230/1.
 - 4) MOTOR TO BE UNDERWRITERS LABORATORIES RECOGNIZED OR APPROVED.
 - 5) FUSE SIZING: PRIMARY FUSE TO BE 500% OF CALCULATED AMPERAGE, SECONDARY FUSE TO BE 187%.
- CALCULATED AMPERAGE EQUALS THE TRANSFORMER VA DIVIDED BY THE VOLTAGE. REFERENCE UL508 FOR PRIMARY FUSING AND NEC FOR SECONDARY FUSING.

UNLESS OTHERWISE SPECIFIED
DIMENSIONS ARE IN INCHES
TOLERANCES ARE:
FRACTIONS ± 1/4
DECIMALS .XX ± .13
ANGLES ± 1/2°

DAP\DRAWINGS\E215406 REV 1 WIRING DIAGRAM DAP
208V/230V/1PH/60Hz & 220V/1PH/50Hz.DWG

		TITLE	
APPROVALS	DATE	WIRING DIAGRAM DAP 208V/230V/1PH/60Hz & 220V/1PH/50Hz WITH PLC OPTION	
DRAWN GWS	12/10/15		
CHECKED RM	12/10/15		
SCALE NTS	SIZE		
SHEET 1 OF 1	A		
DWG NO.		E-215406	
		REV 1	