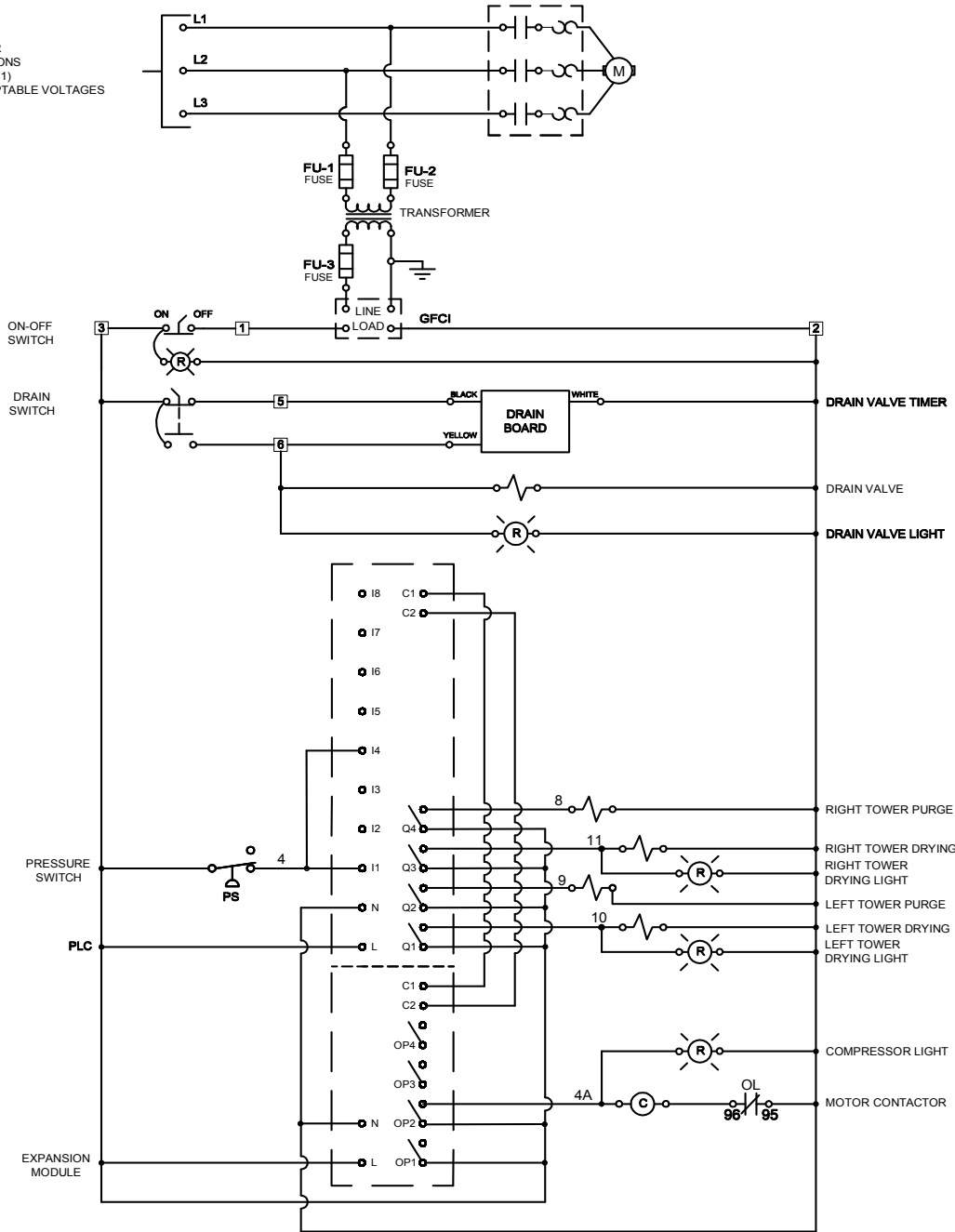


REVISIONS				
ZONE	REV	DESCRIPTION	DATE	APPROVED

CUSTOMER CONNECTIONS
(SEE NOTE 1)
SEE ACCEPTABLE VOLTAGES



NOTES:

- 1) INPUT VOLTAGE IS CONNECTED TO L1, L2 AND L3 CONNECTIONS ON THE POWER TERMINAL BLOCK.
- 2) TRANSFORMER CONNECTIONS ARE DETERMINED BY SUPPLY VOLTAGE.
- 3) * 63NO,64NO FOR UNITS WITH POWER SUPPLY 208-230V, 3 PH, 60HZ AND 220V, 3PH, 50HZ.
- 4) ACCEPTABLE VOLTAGES:
 DAP500B, DAP1000B AND DAP2000B: 480V/230V/208V/3PH/60HZ
 DAP500B-5, DAP1000B-5 AND DAP2000B-5: 575V/3PH/60HZ
 DAP500B-50: 190V/200V/208V/220V/380V/400V/416V/3PH/60HZ
 DAP1000B-50 AND DAP2000B-50: 190V/200V/208V/220V/380V/400V/416V/440V/3PH/50HZ

- 5) MOTOR TO BE UNDERWRITERS LABORATORIES RECOGNIZED OR APPROVED.
- 6) FUSE SIZING: PRIMARY FUSE TO BE 500% OF CALCULATED AMPERAGE, SECONDARY FUSE TO BE 167%.
 CALCULATED AMPERAGE EQUALS THE TRANSFORMER VA DIVIDED BY THE VOLTAGE. REFERENCE UL508 FOR PRIMARY FUSING AND NEC FOR SECONDARY FUSING.

UNLESS OTHERWISE SPECIFIED
DIMENSIONS ARE IN INCHES
TOLERANCES ARE:
 FRACTIONS ± 1/4
 DECIMALS .XX ± .13
 ANGLES ± 1/2°

THIS DRAWING AND ALL OF ITS CONTENTS ARE THE SOLE PROPERTY OF GENERAL AIR PRODUCTS, INC. DETAILS MAY CHANGE WITHOUT NOTICE. THE CONTENTS OF THIS DRAWING, MAY NOT BE REPRODUCED OR INCORPORATED IN WHOLE OR IN PART IN ANY EQUIPMENT, NOR THE MANUFACTURE OF ANY PARTS, WITHOUT WRITTEN CONSENT OF GENERAL AIR PRODUCTS, INCORPORATED.

		TITLE	
APPROVALS	DATE	WIRING DIAGRAM DAP WITH PLC OPTION	
DRAWN GWS	12/09/15		
CHECKED			
SCALE	SIZE	DWG NO.	REV
SHEET	A	E-215404	1