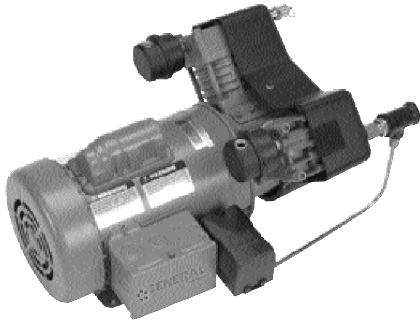




The Leading Manufacturer of Air Compressors
for the Fire Protection Industry

HIGH PRESSURE OILLESS RISER MOUNTED COMPRESSORS
for Dry Pipe Sprinkler Systems - **100 PSI Operation**



- Fully Automatic
- Direct Drive
- Air Intake Filter(s)
- Oil Less Piston Compressor
- UL Listed Pressure Switch
- Bubble Tight Air Check Valve
- Permanently Lubricated Bearings

- 1/2" Outlet Connections
- Thermal Overload Protection
- Riser Mounting Kit Included with "AC" Models
- Fills System to 40 PSI in 30 Minutes (NFPA 13)



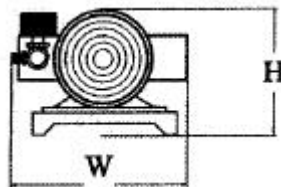
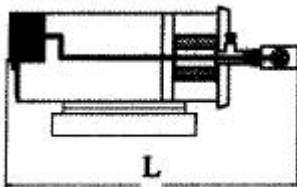
60 Cycle Units - 50 Cycle Available, Consult Factory

System Capacity (gallons)**	Model Number	Motor H.P.	Min. Wire Size ++	Dimensions			Weight (lbs.)
				L	W	H	
80†	OL11016AC-HP	1/6	12	14	9	9	31
160†	OL21533AC-HP	1/3	10	16	9	10	37
220	OL33550AC-HP	1/2	8	16	11	9	49
400	OL435V75AC-HP	3/4	8	20	14	10	54
460	OL610V100AC-HP	1	8	20	14	10	55
860	OL900V150AC-HP	1 1/2	6	26	17	14	78
950‡	OL1200V200AC-HP	2	10	26	17	14	78

++ Based on 100 foot run.
Consult Factory for longer or shorter runs.

** Based on 70 degree F system temp.
For other conditions consult factory for pump up times.

† - 115 volt only, ‡ - 230 volt only, all other units 115/230 volt.
3 Phase Units available - Consult Factory.



Magnetic Line Starters - Thermal Overload Protection
Single Phase

Maximum HP	115V	230V	Size	Model
		1/3 HP	1 HP	00
	1 HP	2 HP	0	MGX0A*
	2 HP	3 HP	1	MG01A*
	3 HP	5 HP	1P	MG15A*

When Ordering a Magnetic Line Starter you must specify HP, Voltage and Phase that is supplied to the motor.

Air Maintenance Device
Part # AMD-1

The AMD-1 is used when compressed air is supplied through an existing factory air supply or when using tank mounted units.

Call 1-800-345-8207

Fax: 610-524-8965

E-Mail: genairpro@generalairproducts.com

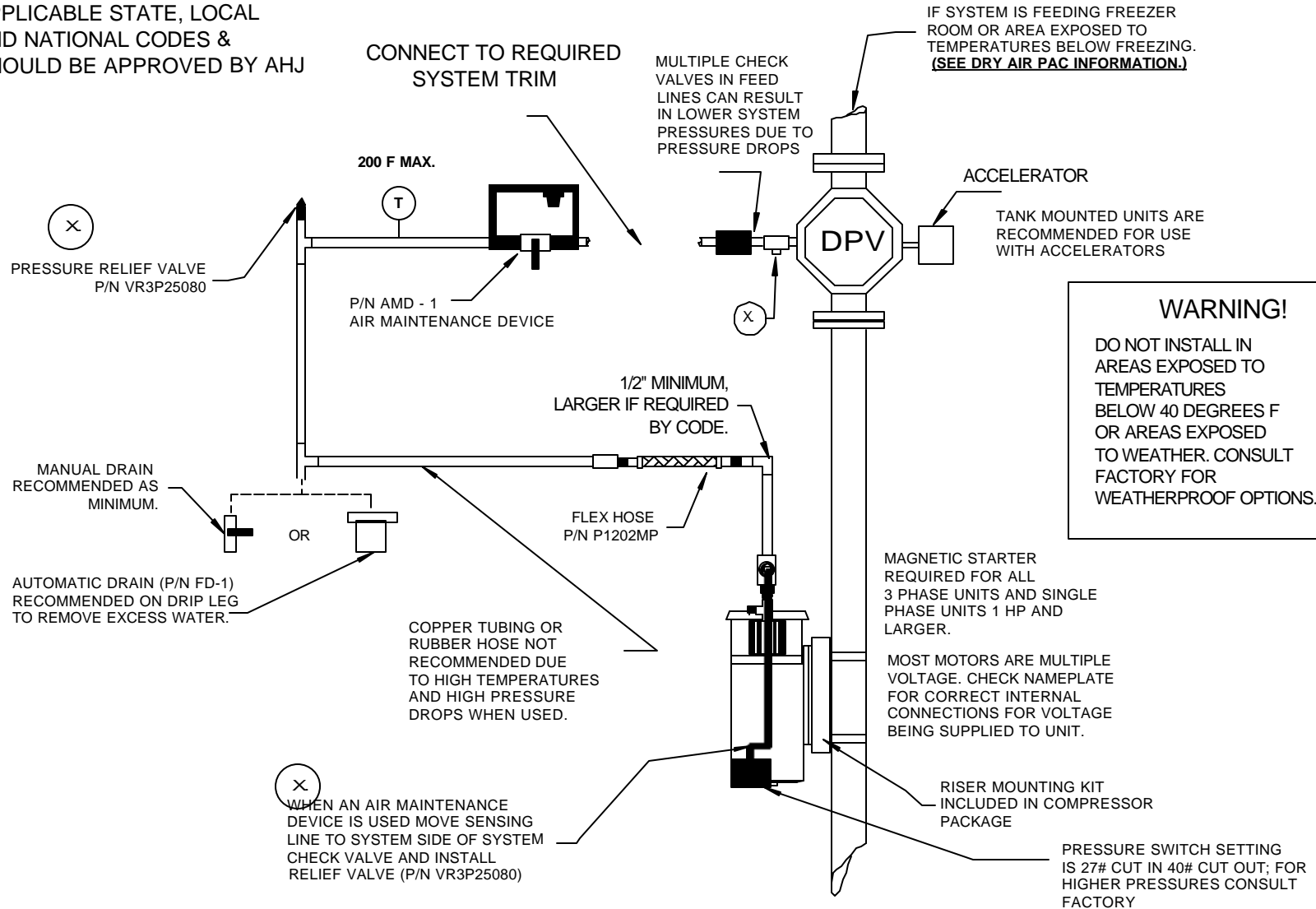
Remember - You can find this sheet and more at

www.GENERALAIRPRODUCTS.com

RISER MOUNT OIL-LESS COMPRESSORS INSTALLATION INSTRUCTIONS



ALL PIPING AND WIRING TO BE IN ACCORDANCE WITH APPLICABLE STATE, LOCAL AND NATIONAL CODES & SHOULD BE APPROVED BY AHJ



PART NUMBERS LISTED ARE FOR ACCESSORY ITEMS RECOMMENDED FOR COMPLETE INSTALLATION - CONSULT YOUR LOCAL DISTRIBUTOR FOR AVAILABILITY