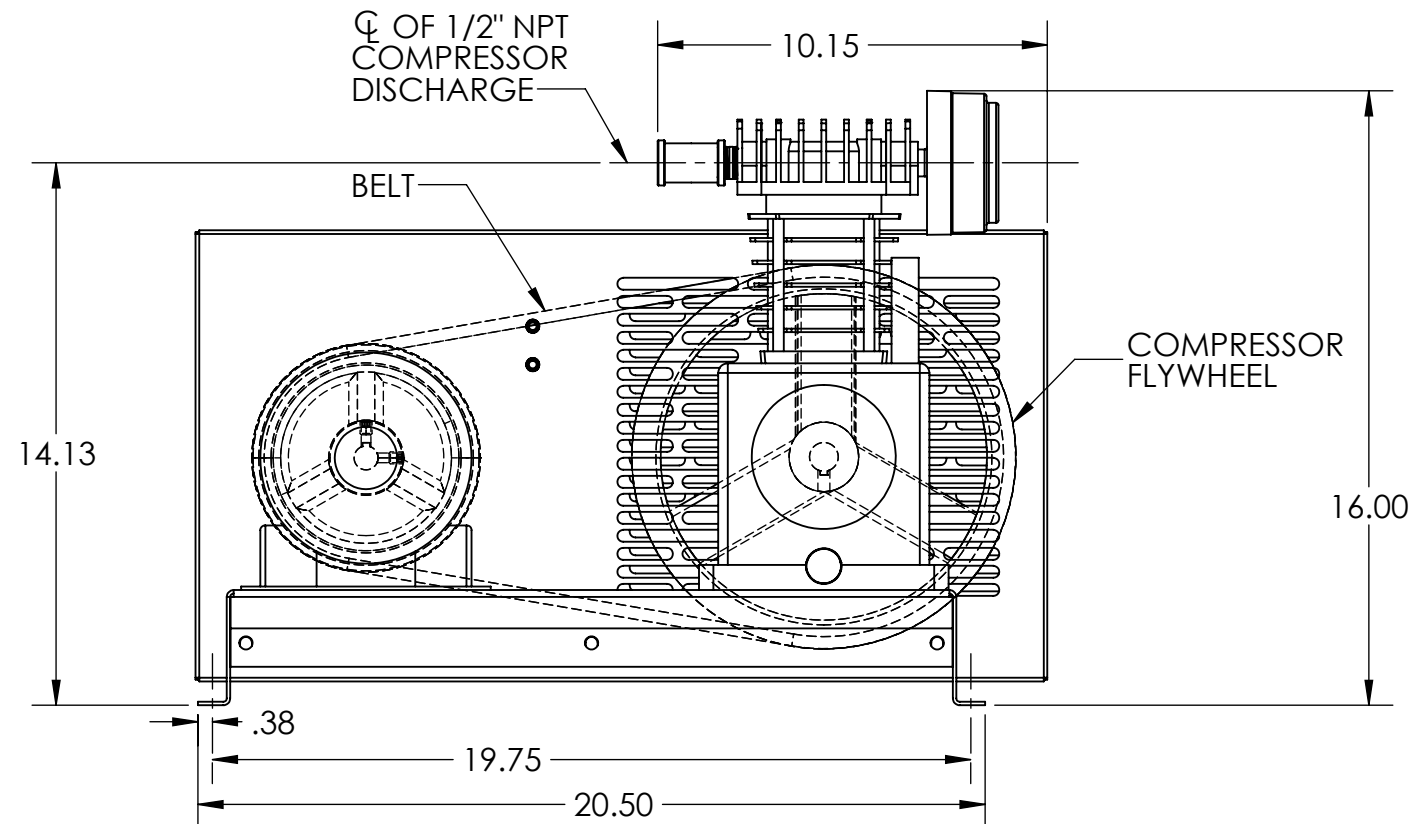
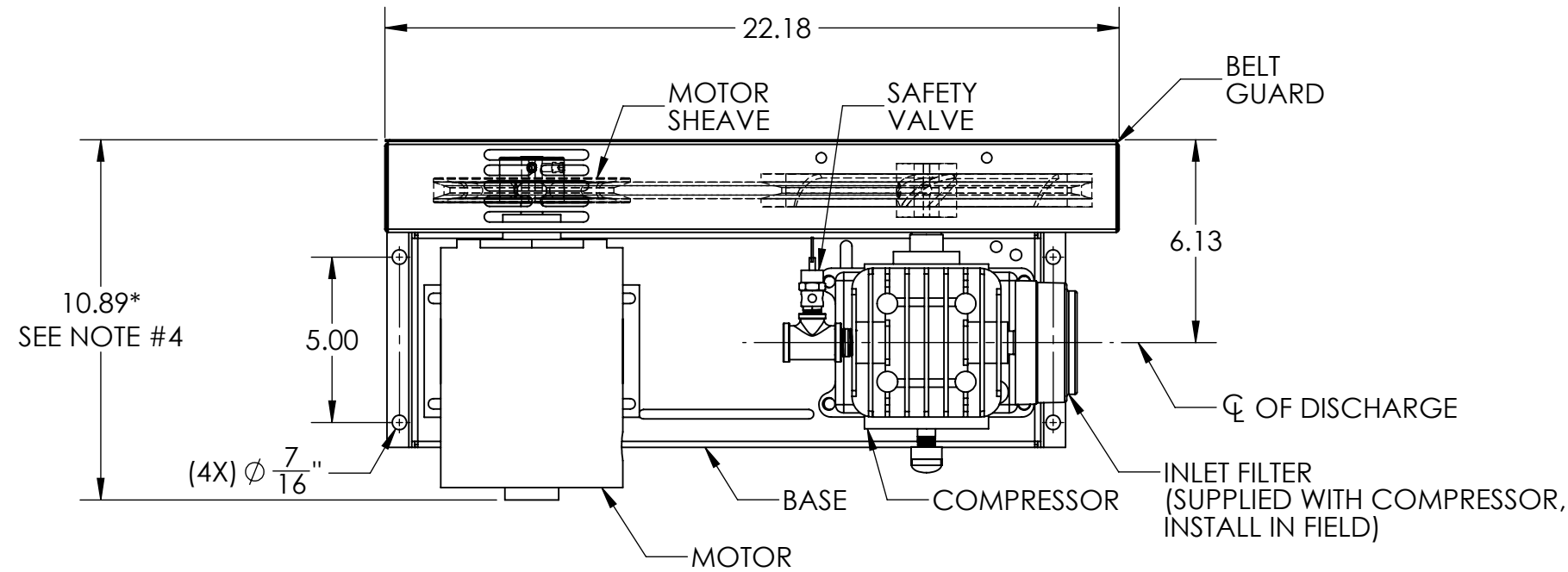


REVISIONS				
ECO	REV	DESCRIPTION	DATE	APPROVED
0149	3	REDRAWN IS SW, INSTALL SAFETY VALVE	10/02/17	DPH
0509	4	ADD 575 VOLTAGE	04/01/20	DPH



- NOTES:
1. THIS DRAWING REPRESENTS MULTIPLE ASSEMBLIES. SEE TABLE BELOW FOR MODELS REPRESENTED.
  2. REFERENCE INDIVIDUAL PARTS LISTS FOR COMPONENT PART NUMBERS.
  3. REFERENCE INSTRUCTION MANUAL FOR INSTALLTION AND WIRING RECOMMENDATIONS.
  4. \*DIMENSION MAY VARY BY MODEL NUMBER.

MODEL NUMBER	VOLTAGE
L36575A	115/208-230V/60HZ/1PH
L36575A-50	110/220V/50HZ/1PH
L36575B	230/460V/60HZ/3PH
L36575B-50	190/380V/50HZ/3PH
L36575B-5	575V/60HZ/3PH

N:\Work\Engineering\Drawing File\COMPRESSORS\BASE MOUNT LUBRICATED COMPRESSORS\  
G-200072 REV 4 GA L36575 BASE MT

UNLESS OTHERWISE SPECIFIED  
DIMENSIONS ARE IN INCHES  
TOLERANCES ARE:

FRACTIONS	DECIMALS	ANGLES
$\pm 1/2$	$.xx \pm .50$	$\pm 1^\circ$

THIS DRAWING AND ALL OF ITS CONTENTS ARE THE SOLE PROPERTY OF GENERAL AIR PRODUCTS, INC. DETAILS MAY CHANGE WITHOUT NOTICE. THE CONTENTS OF THIS DRAWING, MAY NOT BE REPRODUCED OR INCORPORATED IN WHOLE OR IN PART IN ANY EQUIPMENT, NOR THE MANUFACTURE OF ANY PARTS, WITHOUT WRITTEN CONSENT OF GENERAL AIR PRODUCTS, INCORPORATED.

**GENERAL**  
AIR PRODUCTS

APPROVALS	DATE	TITLE:
DRAWN WLW	10/2/2017	<b>GENERAL ARRANGEMENT</b> <b>3/4 HORSEPOWER</b> <b>BASE MOUNTED LUBRICATED COMPRESSORS</b>
CHECKED DPH	10/2/2017	
SCALE	SIZE	
NONE SHEET 1 OF 1	<b>B</b>	
DWG. NO. <b>G-200072</b>		REV <b>4</b>