

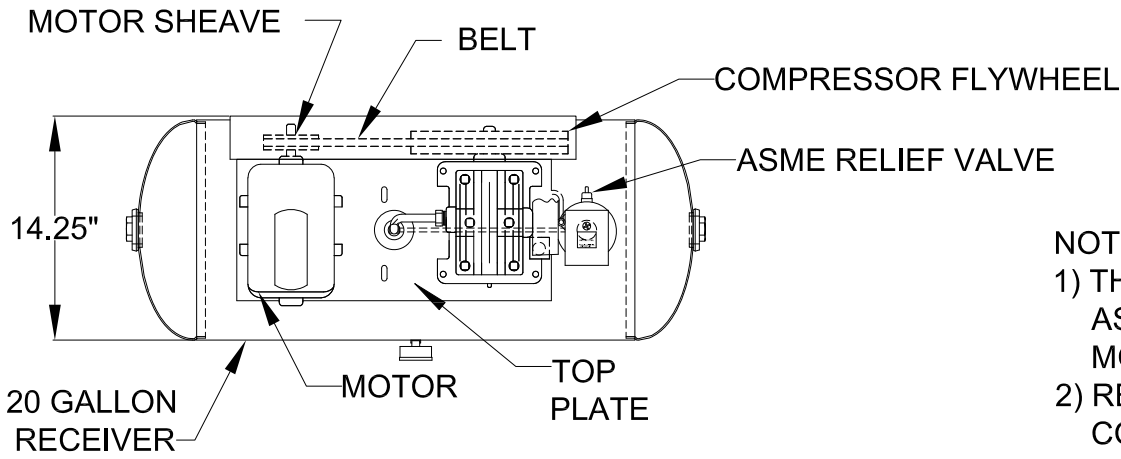
4

3

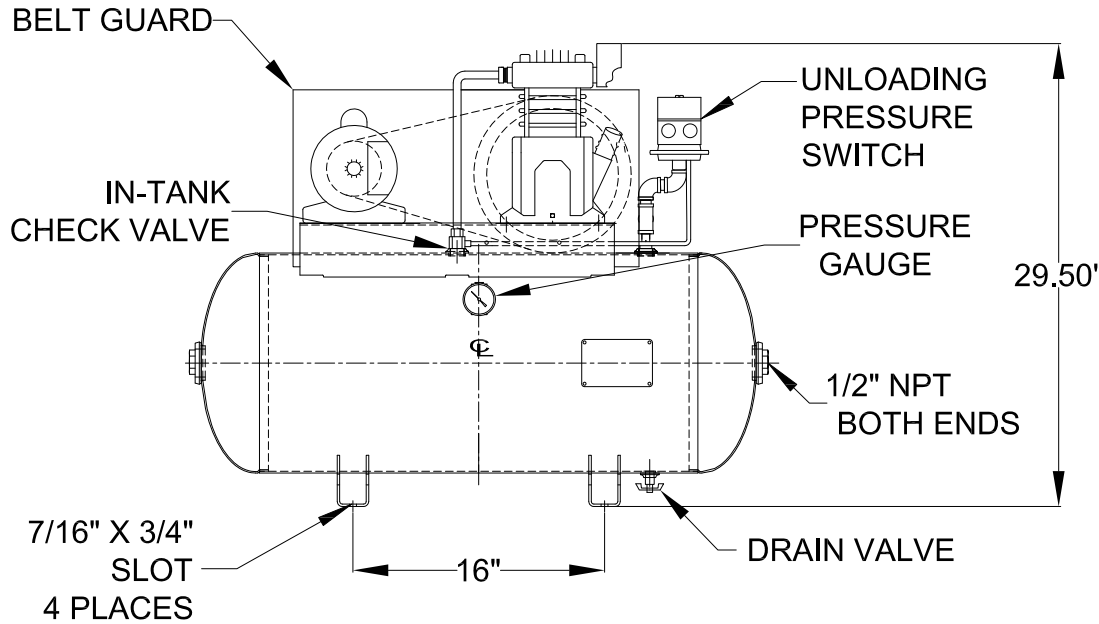
2

1

REVISIONS				
ECO	REV	DESCRIPTION	DATE	APPROVED
	2	REVISED AND REDRAWN TO AUTOCAD	09-24-09	
	3	REVISED TANK TO SHOW NEW PRESSURE GAUGE LOCATION PER ECN #0023	04-09-13	
	4	ADDED -HP MODEL PER ECO #0118	08-16-17	DPH
0509	5	ADD 575 VOLTAGE	05-04-20	DPH

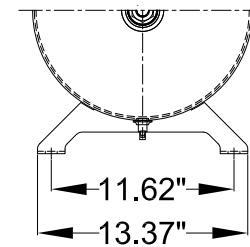


- NOTES:**
- 1) THIS DRAWING REPRESENTS MULTIPLE ASSEMBLIES. SEE TABLE BELOW FOR MODELS REPRESENTED.
 - 2) REFERENCE INDIVIDUAL PARTS LISTS FOR COMPONENT PART NUMBERS.
 - 3) REFERENCE INSTRUCTION MANUAL FOR INSTALLATION AND WIRING RECOMMENDATIONS.



MODEL	VOLTAGE
LT900150A	115/208-230V/60HZ/1PH
LT900150A-HP	115/208-230V/60HZ/1PH
LT900150A-50	110/220V/50HZ/1PH
LT900150B	230/460V/60HZ/3PH
LT900150B-HP	230/460V/60HZ/3PH
LT900150B-50	190/380V/50HZ/3PH
LT900150B-5	575V/60HZ/3PH

LEG DETAIL



COMPRESSORS/LUBRICATED TANK MOUNT/HTZL TANKS/LT-HTZL TANKS GA/SIG-200086 REV 5 GA 1.5HP LT900150

UNLESS OTHERWISE SPECIFIED
DIMENSIONS ARE IN INCHES
TOLERANCES ARE:
FRACTIONS DECIMALS ANGLES
±1/4 .XX ±.50 ±1/2°

		TITLE GENERAL ARRANGEMENT 1 1/2 HORSEPOWER TANK MOUNTED LUBRICATED COMPRESSORS	
APPROVALS DRAWN: EJR CHECKED: DPH	DATE 09-24-09 09-24-09	SCALE NONE	SIZE C
SHEET 1 OF 1		DWG. NO. G-200086	REV 5

4

3

2

1

D

C

B

A

D

C

B

A