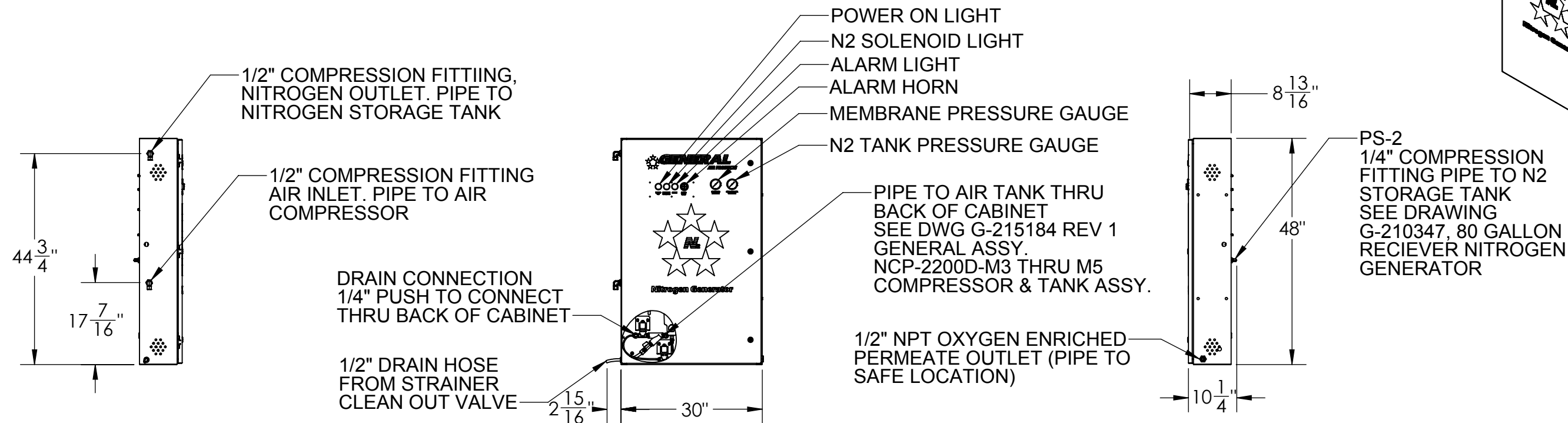


		REVISIONS		
ECO	REV	DESCRIPTION	DATE	APPROVED
	0	RELEASE OF DRAWING	06/26/15	BLE
	1	MOVED SOLENOID TO INSIDE OF CAB.	03/23/16	BLE
0071	2	ADDED STRAINER & CLEAN OUT VALVE	06/17/16	BLE
	3	CHANGE CABINET DOOR LOGO	04/05/16	BLE




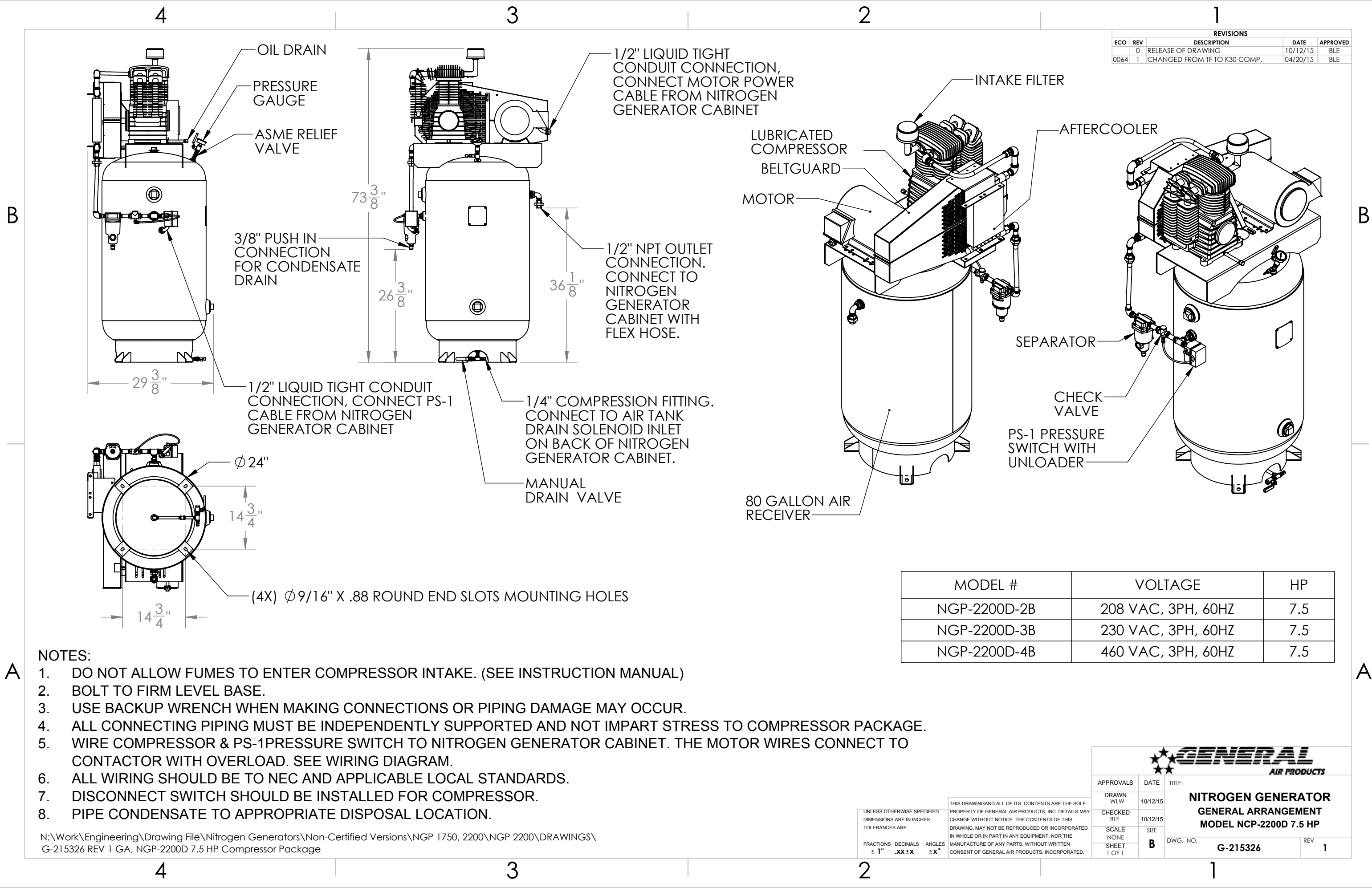
NOTES:

- CONNECT PS-2 PRESSURE SWITCH SENSING LINE ON COMPRESSOR ASEMBLY TO NITROGEN STORAGE TANK USING 1/4" REFRIGERATION TUBING. (TUBING NOT SUPPLIED)
- INSTALL IN WELL VENTILATED AREA. IF A LEAK OCCURS, BUILD UP OF NITROGEN CAN CAUSE ASPHYXIATION. OXYGEN ENRICHED PERMEATE MUST BE VENTED TO PREVENT FIRE/EXPLOSION HAZARD. SEE INSTRUCTION MANUAL.
- BOLT TO FIRM LEVEL BASE (THIS ALSO PROVIDES ELECTROSTATIC GROUNDING)
- USE BACKUP WRENCH WHEN MAKING CONNECTIONS OR PIPING DAMAGE MAY OCCUR.
- ALL CONNECTING PIPING MUST BE INDEPENDENTLY SUPPORTED AND NOT IMPART STRESS TO COMPRESSOR PACKAGE.
- CHANGE FILTERS ONCE A YEAR OR SOONER IF INDICATED BY DIFFERENTIAL PRESSURE GAUGES.
- TO MEASURE N2 LEVEL DISCONNECT QUICK CONNCET HOSE FITTING AND TURN ON ANALYZER. THE ANALYZER WILL AUTOMATICALLY CALIBRATE TO ATMOSPHERIC AIR. THE ANALYZER SHOULD READ A STATE OF 79.1%. RE-INSERT QUICK CONNECT FITTING AND OPEN THE ANALYZER SHUT OFF VALVE. CLOSE THE VALVE AND TURN OFF ANALYZER AFTER USE. FAILURE TO CLOSE THE VALVE MAY RESULT IN HAZARDOUS CONDITIONS WITHIN THE CABINET (BUILD UP OF NITROGEN).
- REPLACE ANALYZER BATTERIES ONCE A YEAR, OR SOONER IF REQUIRED.
- WIRE GENERATOR TO COMPRESSOR MOTOR, AND PS-1 PRESSURE SWITCH. MOTOR WIRES CONNECT TO CONTACTOR WITH OVERLOAD. SEE WIRING DIAGRAM.
- ALL WIRING SHOULD BE TO NEC AND APPLICABLE LOCAL STANDARDS.

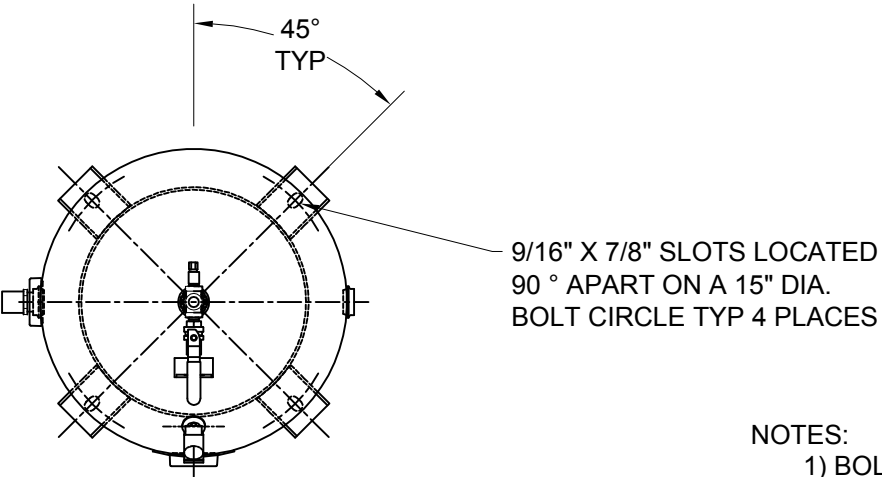
N:\Work\Engineering\Drawing File\Nitrogen Generators\Non-Certified Versions\Generator Cabinets\M2, M3, M4\G-215185 REV 3 GENERAL ASSEMBLY M2, M3, M4 NITROGEN GENERATOR CABINET

UNLESS OTHERWISE SPECIFIED DIMENSIONS ARE IN INCHES TOLERANCES ARE:			THIS DRAWING AND ALL OF ITS CONTENTS ARE THE SOLE PROPERTY OF GENERAL AIR PRODUCTS, INC. DETAILS MAY CHANGE WITHOUT NOTICE. THE CONTENTS OF THIS DRAWING, MAY NOT BE REPRODUCED OR INCORPORATED IN WHOLE OR IN PART IN ANY EQUIPMENT, NOR THE MANUFACTURE OF ANY PARTS, WITHOUT WRITTEN CONSENT OF GENERAL AIR PRODUCTS, INCORPORATED.		
FRACTIONS ±1"	DECIMALS .XX±	ANGLES ±X°			

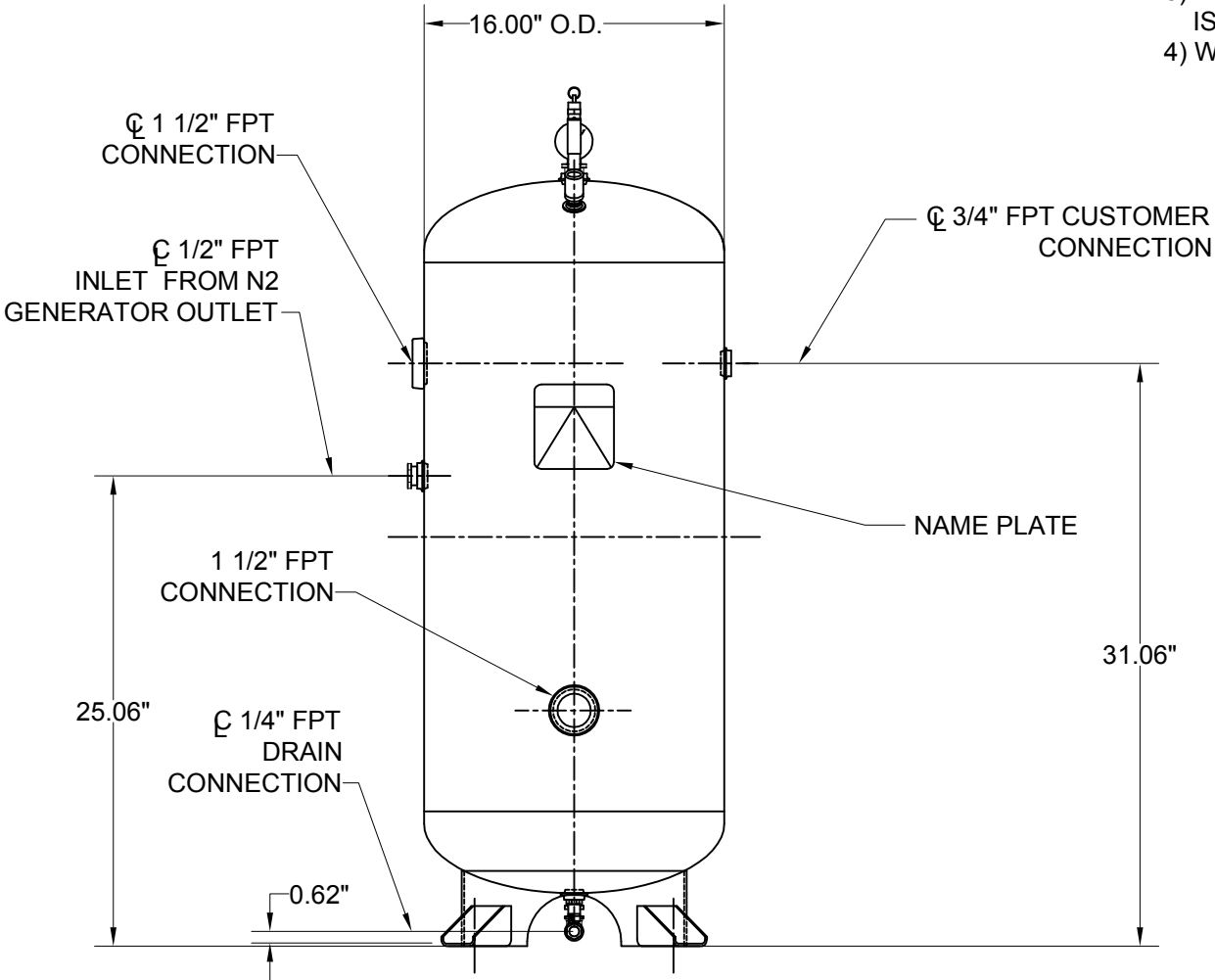
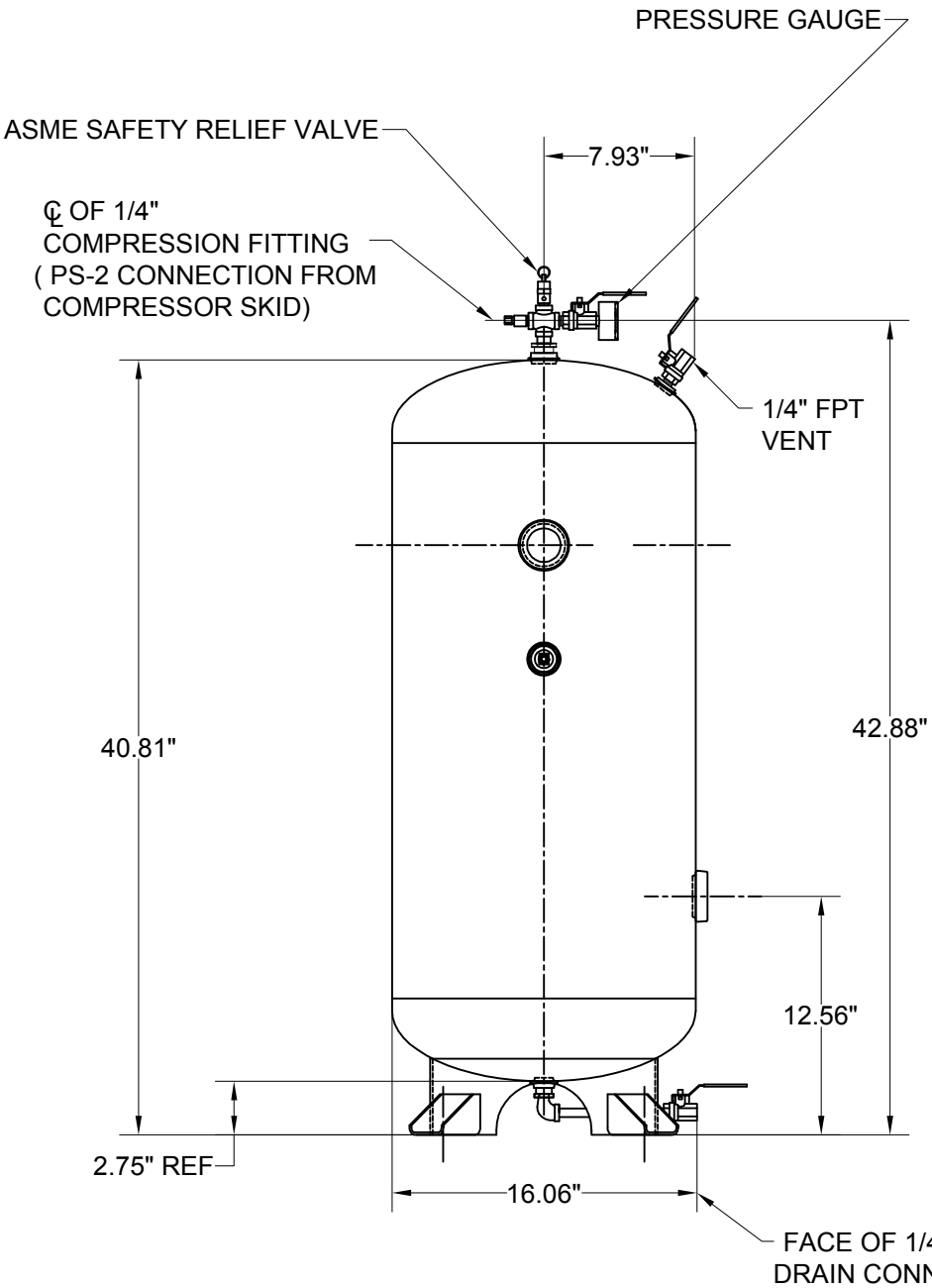
			
APPROVALS	DATE	TITLE:	
DRAWN GWS	06/26/15	GENERAL ASSEMBLY M2 THRU M4 NITROGEN GENERATOR CABINET	
CHECKED BLE	06/26/15		
SCALE NONE	SIZE		
SHEET 1 OF 1	B	DWG. NO.	REV
		G-215185	3



REVISIONS				
ZONE	REV	DESCRIPTION	DATE	APPROVED
B5	1	REMOVED CHECK VALVE	12/10/2010	BLE
	2	REMOVED PETCOCKS ADDED BALL VALVES	12-21-11	BLE




- NOTES:
- 1) BOLT TANK TO A FIRM LEVEL BASE.
 - 2) SUPPORT ALL PIPING TO AND FROM TANK INDEPENDENTLY.
 - 3) MINIMUM PIPE SIZE FROM N2 GENERATOR TANK IS 1/2".
 - 4) WEIGHT: 85 LBS.



NITROGEN GENERATORS\NON-CERTIFIED VERSIONS\NGP 1750, 2200\NGP 2200\G-210363 REV 2 GENERAL ARRANGEMENT 30 GALLON TANK.DWG

UNLESS OTHERWISE SPECIFIED
DIMENSIONS ARE IN INCHES
TOLERANCES ARE:
FRACTIONS DECIMALS ANGLES
±1/2 .XX ± ±

THIS DRAWING AND ALL OF ITS CONTENTS
ARE THE SOLE PROPERTY OF GENERAL AIR
PRODUCTS, INC. DETAILS MAY CHANGE WITHOUT
NOTICE. THE CONTENTS OF THIS DRAWING,
MAY NOT BE REPRODUCED OR INCORPORATED
IN WHOLE OR IN PART IN ANY EQUIPMENT,
NOR THE MANUFACTURE OF ANY PARTS,
WITHOUT WRITTEN CONSENT OF GENERAL AIR
PRODUCTS, INCORPORATED.

					
APPROVALS		DATE	TITLE GENERAL ARRANGEMENT V3, 30 GALLON N2 RECEIVER NITROGEN GENERATOR		
DRAWN EJR		11-03-10			
CHECKED BLE		11-03-10			
SCALE		SIZE			
SHEET 1 OF 1		D	DWG. NO.		G-210363
					REV 2