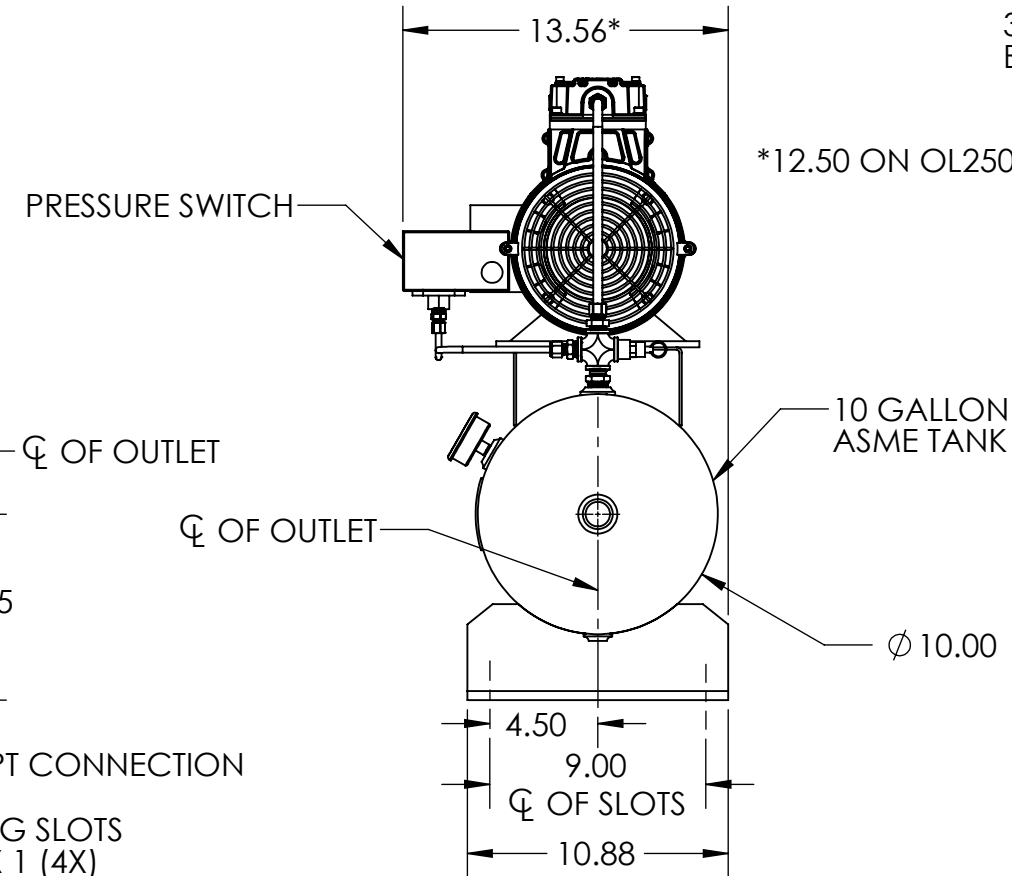
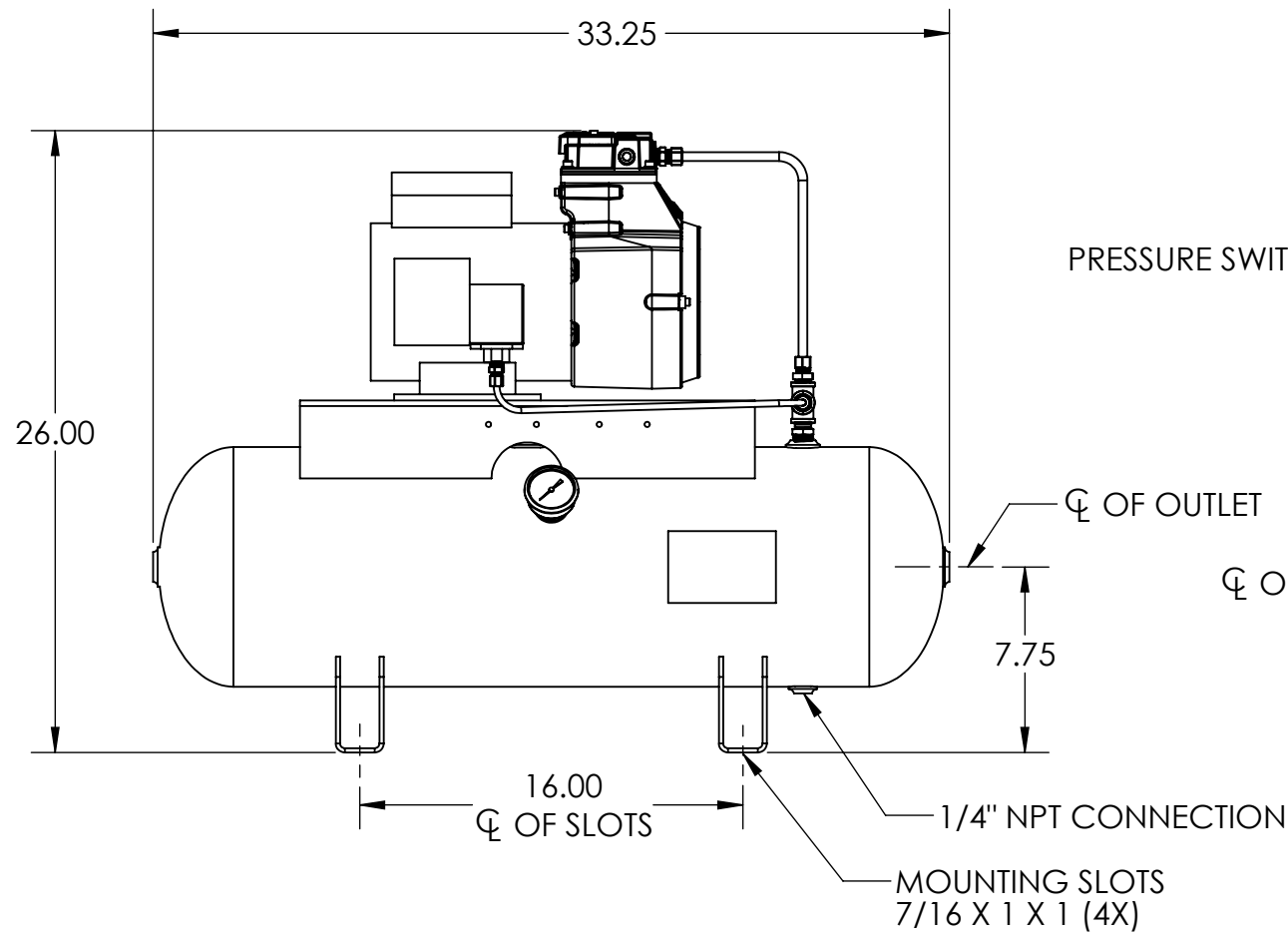
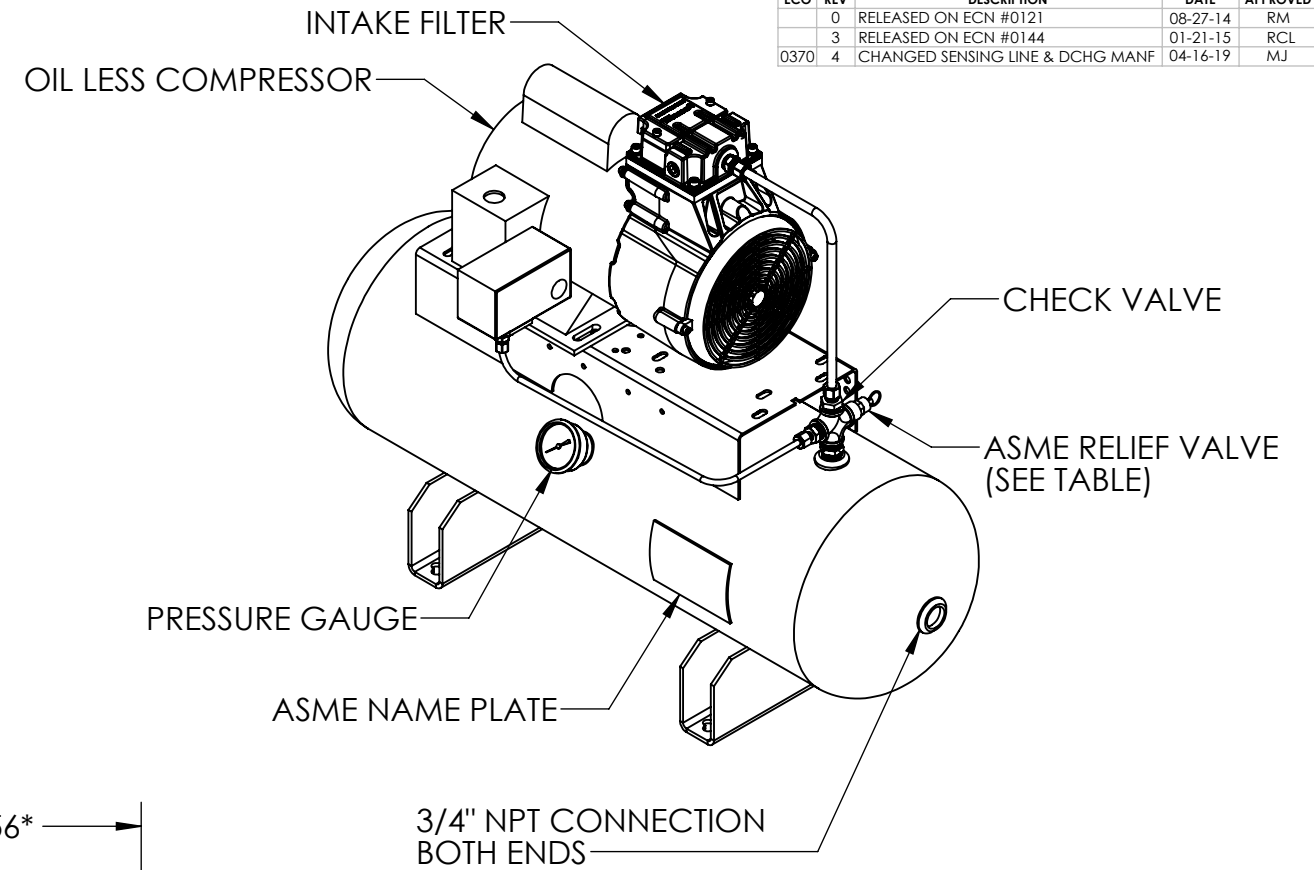


MOTOR	MODEL	VOLTAGE	PRESSURE SWITCH SETTINGS		RELIEF VALVE	NET WEIGHT	REBUILD KIT #
			ON	OFF			
1/6 HP	OL12516ACT	115/208-230V/1PH/60HZ	27 - 30 PSIG	40 - 44 PSIG	75 PSIG	75 LBS.	OLC-RK
	OL39012ACT-50	220-240V/1PH/50HZ					
1/3 HP	OL75025ACT-50	115/208-230V/1PH/60HZ	80 PSIG	100 PSIG	125 PSIG		
	OL25033ACT						
	OL25033ACT-HP						

REVISIONS				
ECO	REV	DESCRIPTION	DATE	APPROVED
	0	RELEASED ON ECN #0121	08-27-14	RM
	3	RELEASED ON ECN #0144	01-21-15	RCL
0370	4	CHANGED SENSING LINE & DCHG MANF	04-16-19	MJ

NOTES:

- COMPRESSOR APPEARANCE MAY VARY.
- DIMENSIONS ARE SUBJECT TO CHANGE WITHOUT NOTICE.
- ALL PIPING MUST BE INDEPENDENTLY SUPPORTED TO AVOID ANY UNDO STRESS ON COMPRESSOR HEAD.
- REBUILD KIT (OLC-RK) CONSISTS OF REPLACEMENT CYLINDER, CUP, & INTAKE FILTER.



APPROVALS	DATE	TITLE:
DRAWN GWS	8/27/14	GENERAL ARRANGEMENT 1 CYLINDER OIL LESS FIRE PROTECTION COMPRESSOR, TANK MOUNT
CHECKED RM	8/27/14	
SCALE NONE	SIZE B	DWG. NO. G-214213
SHEET 1 OF 1		REV 4

UNLESS OTHERWISE SPECIFIED DIMENSIONS ARE IN INCHES TOLERANCES ARE:
 FRACTIONS DECIMALS ANGLES
 $\pm 1/4$.xx ± 1.00 $\pm 1^\circ$

THIS DRAWING AND ALL OF ITS CONTENTS ARE THE SOLE PROPERTY OF GENERAL AIR PRODUCTS, INC. DETAILS MAY CHANGE WITHOUT NOTICE. THE CONTENTS OF THIS DRAWING MAY NOT BE REPRODUCED OR INCORPORATED IN WHOLE OR IN PART IN ANY EQUIPMENT, NOR THE MANUFACTURE OF ANY PARTS, WITHOUT WRITTEN CONSENT OF GENERAL AIR PRODUCTS, INCORPORATED.