

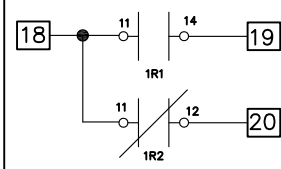
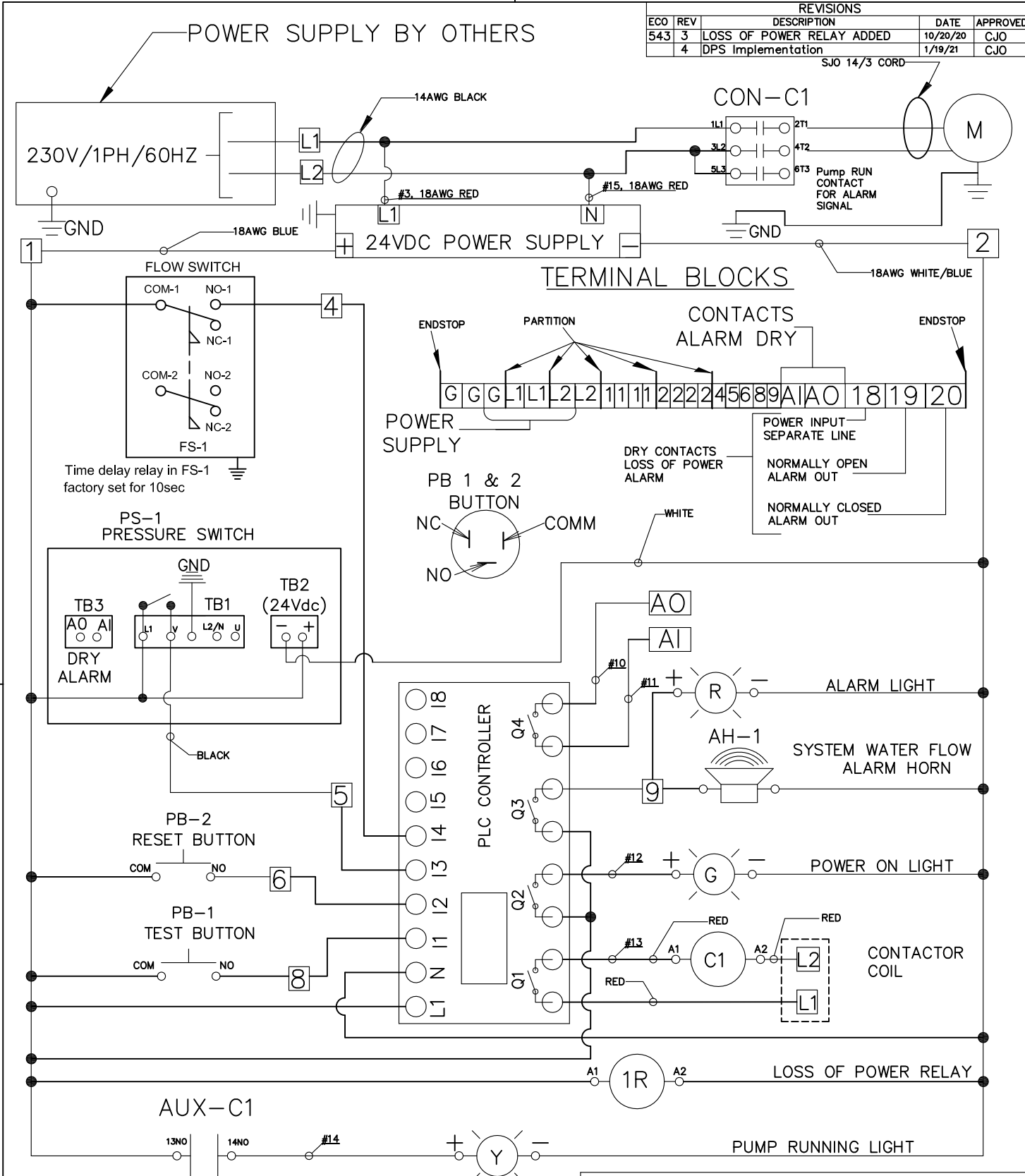


Wiring Diagrams for RFP Systems

Index

- Page 2** RFP Controls System Wiring Diagram with PLC and Digital Pressure Switch
- Page 3** RFP No Controls System Wiring Diagram with Mechanical Pressure Switch
- Page 4** Econo No Controls System Wiring Diagram with Mechanical Pressure Switch
- Page 5** RFP AND Econo, $\frac{3}{4}$ Hp to 3 Hp, System Wiring Diagram, No Controls with Digital Pressure Switch
- Page 6** RFP and Econo 5 Hp, System Wiring Diagram, No Controls with Digital Pressure Switch

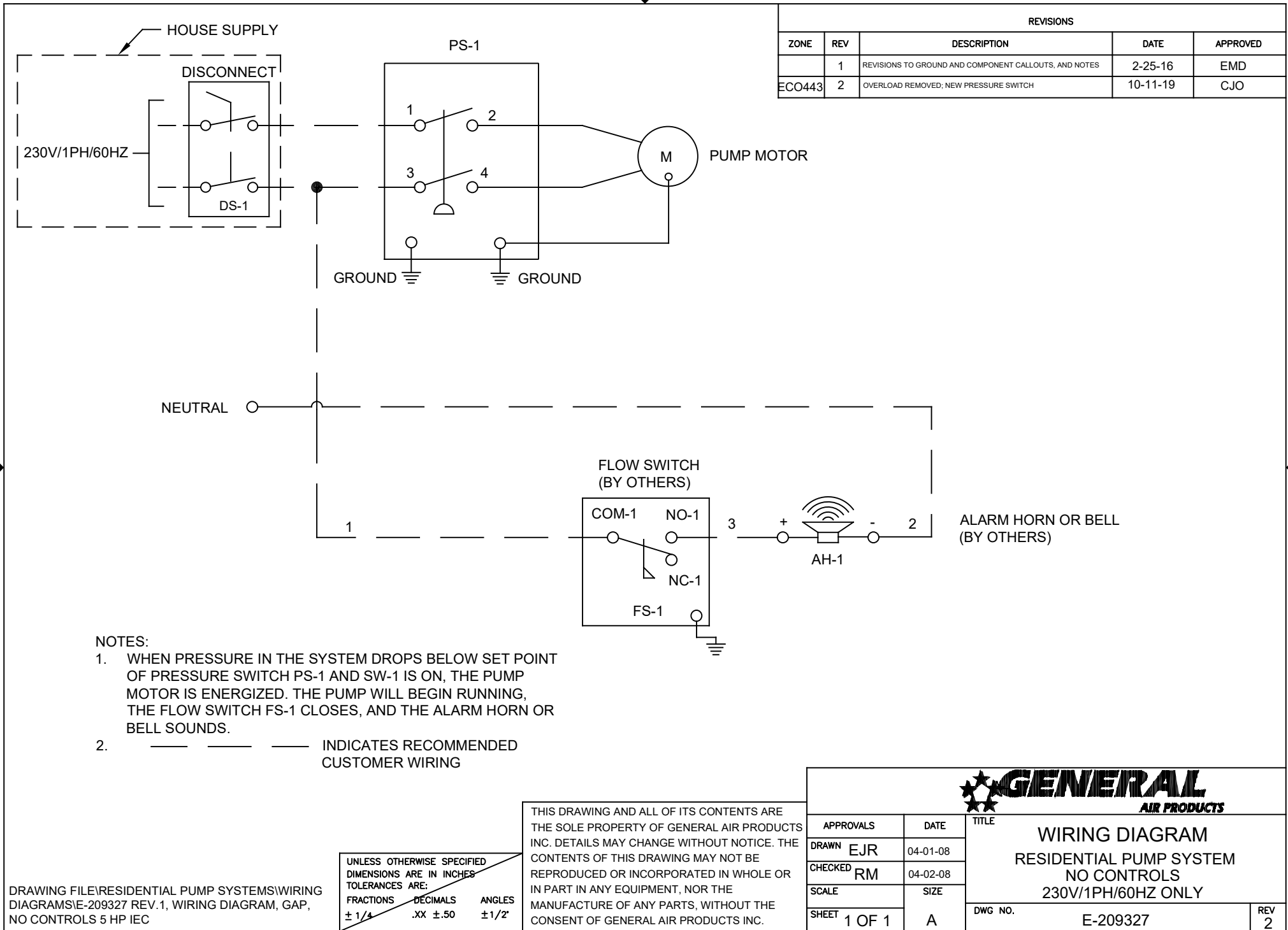
REVISIONS				
ECO	REV	DESCRIPTION	DATE	APPROVED
543	3	LOSS OF POWER RELAY ADDED	10/20/20	CJO
	4	DPS Implementation	1/19/21	CJO



UNLESS OTHERWISE SPECIFIED
DIMENSIONS ARE IN INCHES
TOLERANCES ARE:
FRACTIONS .XX ±X ANGLES ±X°

THIS DRAWING AND ALL OF ITS CONTENTS ARE THE SOLE PROPERTY OF GENERAL AIR PRODUCTS, INC. DETAILS MAY CHANGE WITHOUT NOTICE. THE CONTENTS OF THIS DRAWING, MAY NOT BE REPRODUCED OR INCORPORATED IN WHOLE OR IN PART IN ANY EQUIPMENT, NOR THE MANUFACTURE OF ANY PARTS, WITHOUT WRITTEN CONSENT OF GENERAL AIR PRODUCTS, INCORPORATED.

		APPROVALS		DATE	TITLE:	
		DRAWN	CJO	8/23/2019	RFPS WIRING DIAGRAM PLC CONTROLS SCHEME 230V/1PH/60HZ ONLY	
		CHECKED		8/23/2019		
		SCALE	1:1	SIZE	A	
		SHEET	1 OF 1	DWG. NO.	E-219294	
					REV	4



REVISIONS				
ZONE	REV	DESCRIPTION	DATE	APPROVED
	1	REVISIONS TO GROUND AND COMPONENT CALLOUTS, AND NOTES	2-25-16	EMD
ECO443	2	OVERLOAD REMOVED; NEW PRESSURE SWITCH	10-11-19	CJO

NOTES:

1. WHEN PRESSURE IN THE SYSTEM DROPS BELOW SET POINT OF PRESSURE SWITCH PS-1 AND SW-1 IS ON, THE PUMP MOTOR IS ENERGIZED. THE PUMP WILL BEGIN RUNNING, THE FLOW SWITCH FS-1 CLOSES, AND THE ALARM HORN OR BELL SOUNDS.
2. INDICATES RECOMMENDED CUSTOMER WIRING

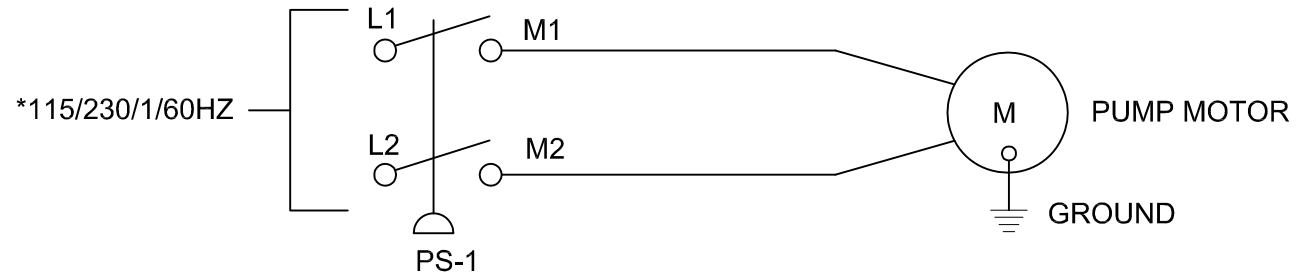
UNLESS OTHERWISE SPECIFIED DIMENSIONS ARE IN INCHES TOLERANCES ARE:		
FRACTIONS	DECIMALS	ANGLES
± 1/4	.XX ±.50	± 1/2°

THIS DRAWING AND ALL OF ITS CONTENTS ARE THE SOLE PROPERTY OF GENERAL AIR PRODUCTS INC. DETAILS MAY CHANGE WITHOUT NOTICE. THE CONTENTS OF THIS DRAWING MAY NOT BE REPRODUCED OR INCORPORATED IN WHOLE OR IN PART IN ANY EQUIPMENT, NOR THE MANUFACTURE OF ANY PARTS, WITHOUT THE CONSENT OF GENERAL AIR PRODUCTS INC.

DRAWING FILE: RESIDENTIAL PUMP SYSTEMS\WIRING DIAGRAMS\E-209327 REV.1, WIRING DIAGRAM, GAP, NO CONTROLS 5 HP IEC

		TITLE	
		WIRING DIAGRAM RESIDENTIAL PUMP SYSTEM NO CONTROLS 230V/1PH/60HZ ONLY	
APPROVALS	DATE	DWG NO.	REV
DRAWN EJR	04-01-08		
CHECKED RM	04-02-08		
SCALE	SIZE		
SHEET 1 OF 1	A		

REVISIONS				
ZONE	REV	DESCRIPTION	DATE	APPROVED
	1	ADDED 115V DESIGNATION AND NOTES.	11-18-11	



NOTES:

- 1) WHEN PS1 DROPS PRESSURE, CLOSING THE SWITCH, THE PUMP IS ENERGIZED .
- 2) ON 115 VOLT UNITS L1 IS NEUTRAL.

* 115 VOLT DOES NOT FOLLOW THE CURRENT REQUIREMENT ACCORDING TO SECTION 6.2.2(2) OF NFPA 13D 2010 EDITION.

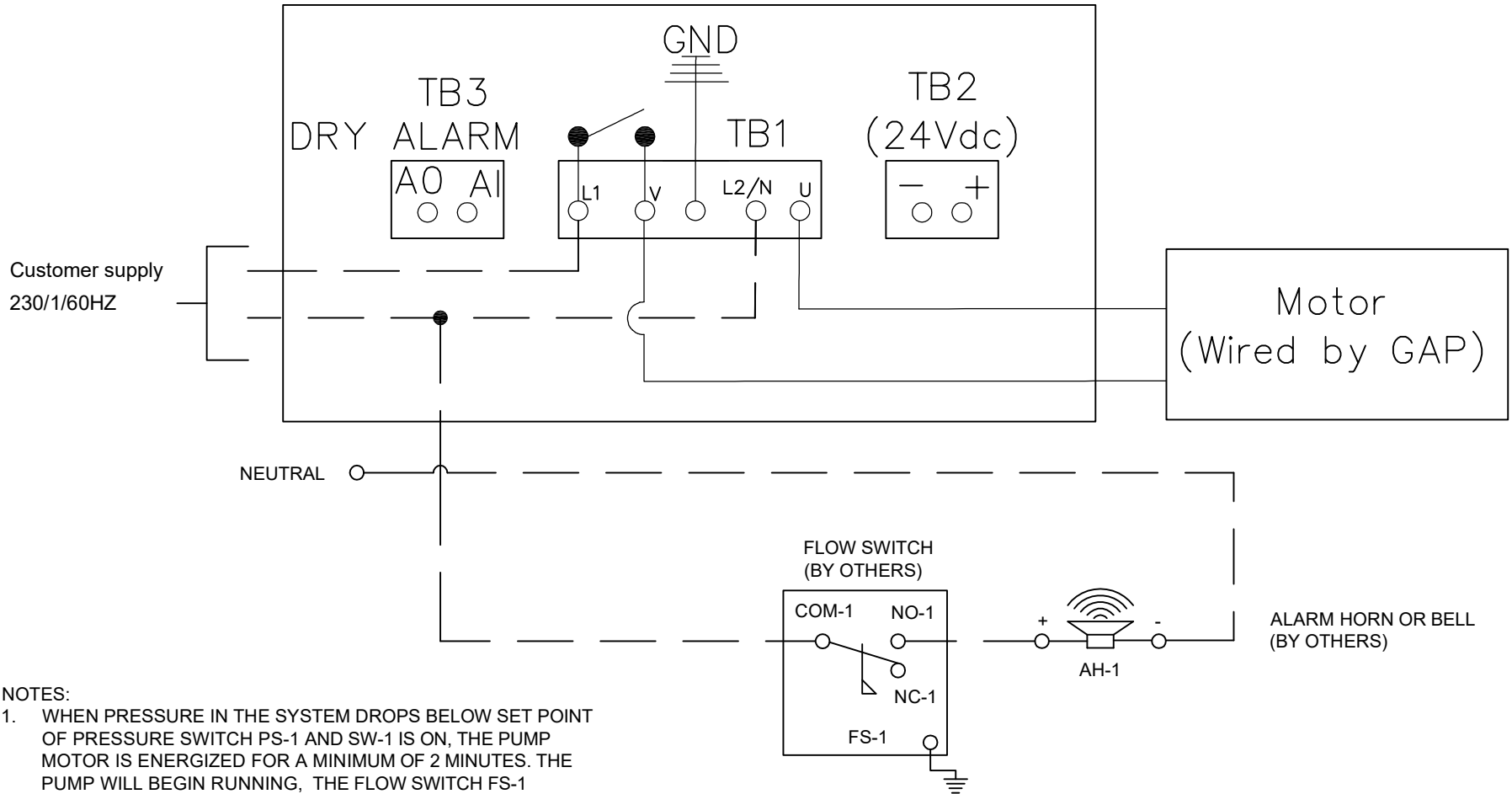
UNLESS OTHERWISE SPECIFIED
 DIMENSIONS ARE IN INCHES
 TOLERANCES ARE:
 FRACTIONS DECIMALS ANGLES
 ±1/4 .XX±.13 ±1/2°

THIS DRAWING AND ALL OF ITS CONTENTS ARE THE SOLE PROPERTY OF GENERAL AIR PRODUCTS, INC. DETAILS MAY CHANGE WITHOUT NOTICE. THE CONTENTS OF THIS DRAWING, MAY NOT BE REPRODUCED OR INCORPORATED IN WHOLE OR IN PART IN ANY EQUIPMENT, NOR THE MANUFACTURE OF ANY PARTS, WITHOUT WRITTEN CONSENT OF GENERAL AIR PRODUCTS, INCORPORATED.

		TITLE WIRING DIAGRAM RESIDENTIAL FIRE PROTECTION XPS SERIES	
APPROVALS DRAWN EJR CHECKED RM SCALE NTS SHEET 1 OF 1	DATE 03-08-10 05-08-10 C	DWG NO. E-210076	REV 1

PS-1 PRESSURE SWITCH

REVISIONS				
ZONE	REV	DESCRIPTION	DATE	APPROVED
443	5	OVERLOAD REMOVED, NEW PRESSURE SWITCH	10-11-19	CJO
	6	DPS IMPLEMENTATION	1-20-21	CJO




NOTES:

1. WHEN PRESSURE IN THE SYSTEM DROPS BELOW SET POINT OF PRESSURE SWITCH PS-1 AND SW-1 IS ON, THE PUMP MOTOR IS ENERGIZED FOR A MINIMUM OF 2 MINUTES. THE PUMP WILL BEGIN RUNNING, THE FLOW SWITCH FS-1 CLOSES, AND THE ALARM HORN OR BELL SOUNDS.
2. ——— INDICATES RECOMMENDED CUSTOMER WIRING
3. CONNECT GROUND WIRE FROM SOURCE TO GROUND CONNECTION IN PRESSURE SWITCH.

UNLESS OTHERWISE SPECIFIED DIMENSIONS ARE IN INCHES TOLERANCES ARE:		
FRACTIONS	DECIMALS	ANGLES
± 1/4	.XX ±.50	± 1/2°

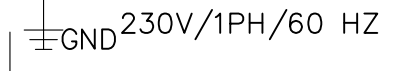
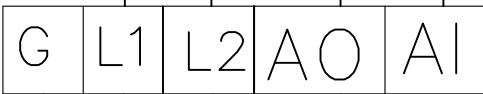
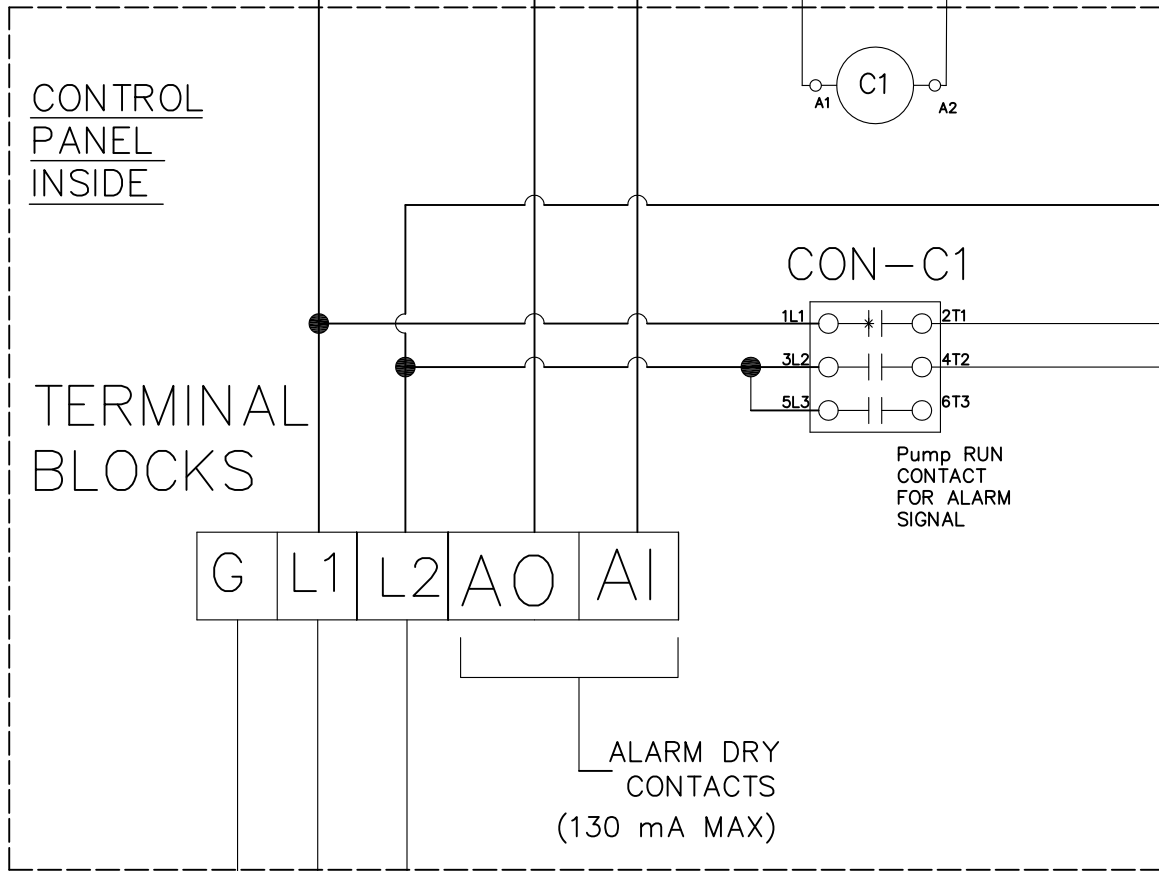
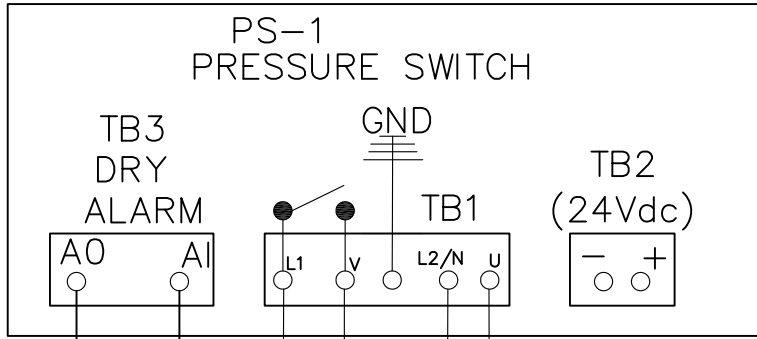
DRAWING FILE\RESIDENTIAL PUMP SYSTEMS\WIRING DIAGRAMS\E-208078 REV., WIRING DIAGRAM, GAP, NO CONTROLS .75 THRU 3 HP IEC

THIS DRAWING AND ALL OF ITS CONTENTS ARE THE SOLE PROPERTY OF GENERAL AIR PRODUCTS INC. DETAILS MAY CHANGE WITHOUT NOTICE. THE CONTENTS OF THIS DRAWING MAY NOT BE REPRODUCED OR INCORPORATED IN WHOLE OR IN PART IN ANY EQUIPMENT, NOR THE MANUFACTURE OF ANY PARTS, WITHOUT THE CONSENT OF GENERAL AIR PRODUCTS INC.

APPROVALS		DATE	TITLE
DRAWN	EJR	04-01-08	 WIRING DIAGRAM RESIDENTIAL PUMP SYSTEM NO CONTROLS .75 THRU 3 HP 230V/1PH/60HZ ONLY
CHECKED	RM	04-02-08	
SCALE		SIZE	
SHEET	1 OF 1	A	DWG NO. E-208078
			REV 6

REVISIONS				
ECO	REV	DESCRIPTION	DATE	APPROVED
626	1		2/9/22	
	2	ADDED GROUND TERMINAL	6/15/22	DPH

CUSTOMER TO BRING POWER TO L1 and L2 INSIDE PANEL



CUSTOMER SUPPLIED

UNLESS OTHERWISE SPECIFIED DIMENSIONS ARE IN INCHES TOLERANCES ARE:

FRACTIONS DECIMALS ANGLES
 $\pm X$.XX $\pm X$ $\pm X^\circ$

THIS DRAWING AND ALL OF ITS CONTENTS ARE THE SOLE PROPERTY OF GENERAL AIR PRODUCTS, INC. DETAILS MAY CHANGE WITHOUT NOTICE. THE CONTENTS OF THIS DRAWING, MAY NOT BE REPRODUCED OR INCORPORATED IN WHOLE OR IN PART IN ANY EQUIPMENT, NOR THE MANUFACTURE OF ANY PARTS, WITHOUT WRITTEN CONSENT OF GENERAL AIR PRODUCTS, INCORPORATED.



APPROVALS	DATE	TITLE:	RESIDENTIAL PUMP SYSTEM WIRING DIAGRAM NO CONTROLS 5 HP
DRAWN CJO	8/23/2019		
CHECKED CJO	8/23/2019		
SCALE 1:1	SIZE A		
SHEET 1 OF 1		E-221141	REV 2