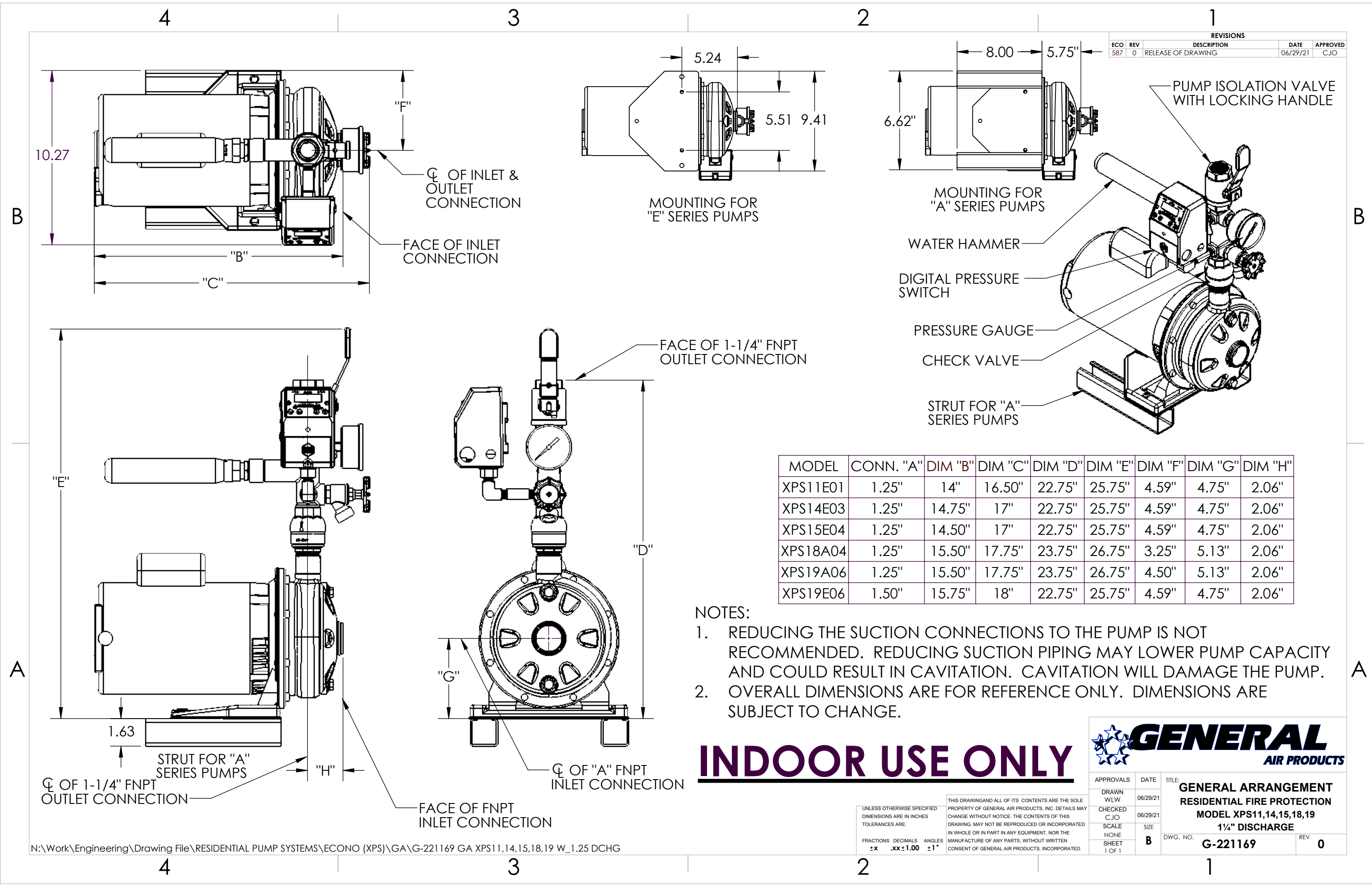


REVISIONS				
ECO	REV	DESCRIPTION	DATE	APPROVED
587	0	RELEASE OF DRAWING	06/29/21	CJO



MODEL	CONN. "A"	DIM "B"	DIM "C"	DIM "D"	DIM "E"	DIM "F"	DIM "G"	DIM "H"
XPS11E01	1.25"	14"	16.50"	22.75"	25.75"	4.59"	4.75"	2.06"
XPS14E03	1.25"	14.75"	17"	22.75"	25.75"	4.59"	4.75"	2.06"
XPS15E04	1.25"	14.50"	17"	22.75"	25.75"	4.59"	4.75"	2.06"
XPS18A04	1.25"	15.50"	17.75"	23.75"	26.75"	3.25"	5.13"	2.06"
XPS19A06	1.25"	15.50"	17.75"	23.75"	26.75"	4.50"	5.13"	2.06"
XPS19E06	1.50"	15.75"	18"	22.75"	25.75"	4.59"	4.75"	2.06"

- NOTES:
1. REDUCING THE SUCTION CONNECTIONS TO THE PUMP IS NOT RECOMMENDED. REDUCING SUCTION PIPING MAY LOWER PUMP CAPACITY AND COULD RESULT IN CAVITATION. CAVITATION WILL DAMAGE THE PUMP.
 2. OVERALL DIMENSIONS ARE FOR REFERENCE ONLY. DIMENSIONS ARE SUBJECT TO CHANGE.

INDOOR USE ONLY



APPROVALS	DATE	TITLE:
DRAWN WLW	06/29/21	GENERAL ARRANGEMENT RESIDENTIAL FIRE PROTECTION MODEL XPS11,14,15,18,19 1 1/4" DISCHARGE
CHECKED CJO	06/29/21	DWG. NO. G-221169
SCALE NONE	SIZE B	REV 0
FRACTIONS ±x	DECIMALS .xx±1.00	ANGLES ±1°