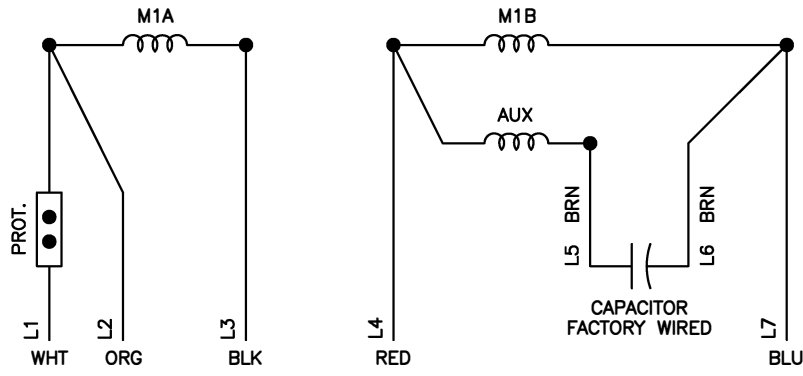
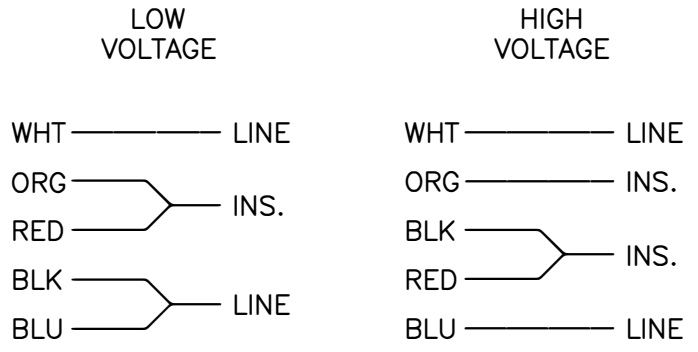


REVISIONS				
ECO	REV	DESCRIPTION	DATE	APPROVED
0631	0	RELEASE OF DRAWING	03/08/22	DPH



CONNECTIONS

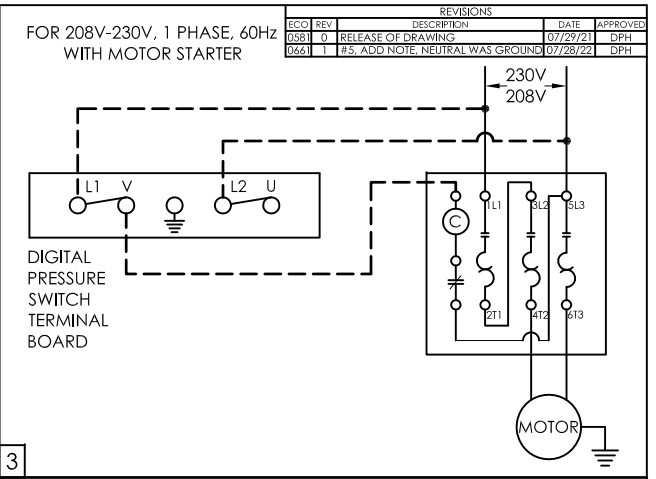
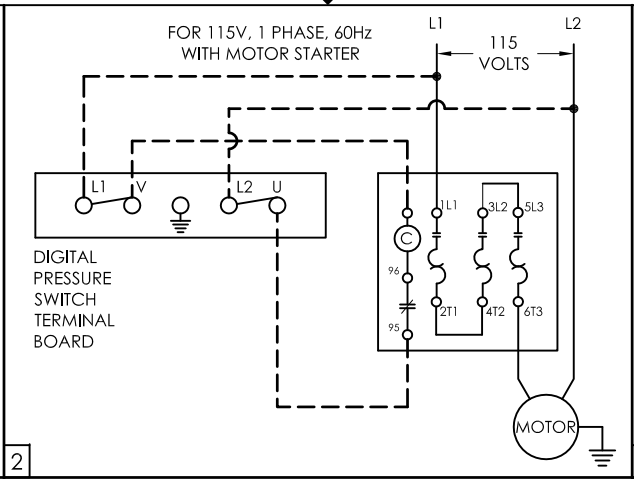
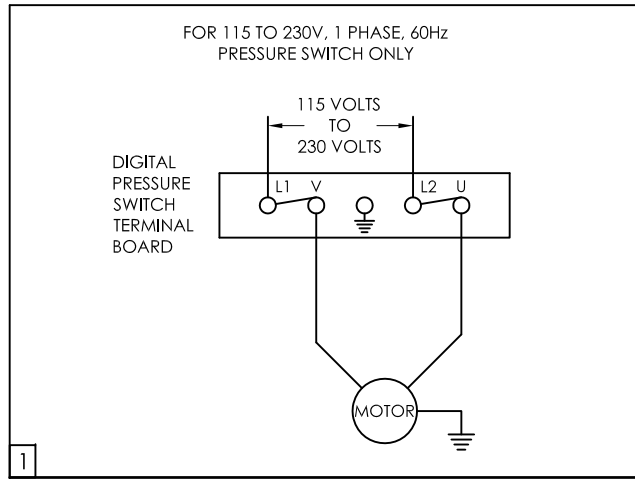


ROTATION – C.C.W. LEAD END

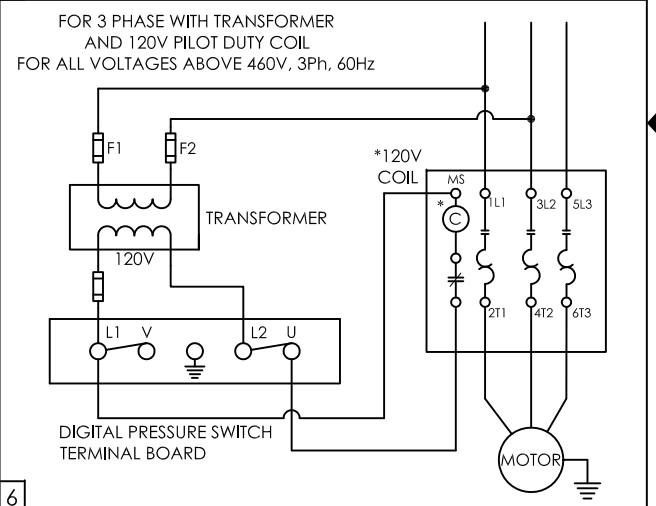
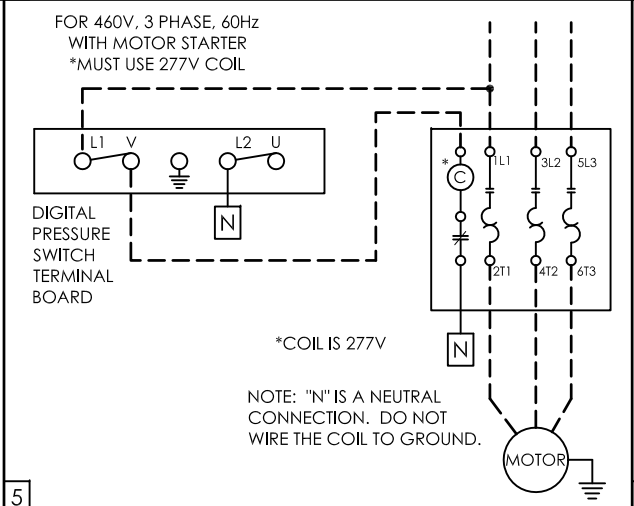
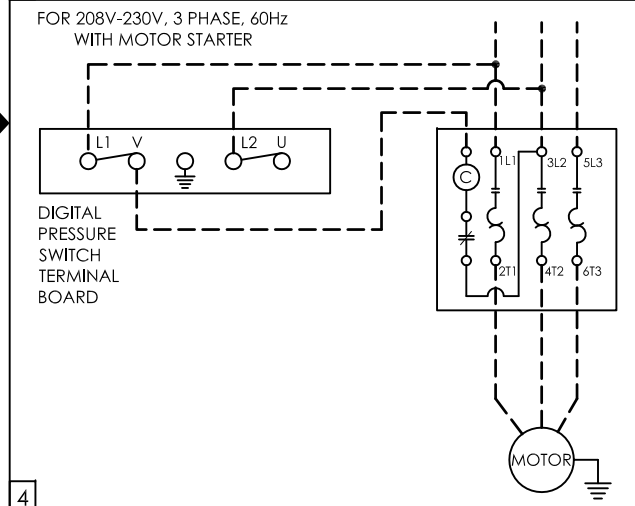
- THIS DIAGRAM IS USED FOR ALL OL(R)(T)12016AC TO OL(R)(T)600AC 60Hz & 50Hz SINGLE

THIS DRAWING AND ALL OF ITS CONTENTS ARE THE SOLE PROPERTY OF GENERAL AIR PRODUCTS, INC. DETAILS MAY CHANGE WITHOUT NOTICE. THE CONTENTS OF THIS DRAWING, MAY NOT BE REPRODUCED OR INCORPORATED IN WHOLE OR IN PART IN ANY EQUIPMENT, NOR THE MANUFACTURE OF ANY PARTS, WITHOUT WRITTEN CONSENT OF GENERAL AIR PRODUCTS, INCORPORATED.

		TITLE	
		MOTOR CONNECTION WIRING DIAGRAM #10807, #10808, & #10784	
APPROVALS	DATE	DWG NO. E-222090	
DRAWN WLW	03/07/22	REV	0
CHECKED DPH	03/07/22		
SCALE NONE	SIZE A		
SHEET 1/1			



REVISIONS				
ECO	REV	DESCRIPTION	DATE	APPROVED
0581	0	RELEASE OF DRAWING	07/29/21	DPH
0641	1	#5, ADD NOTE, NEUTRAL WAS GROUND	07/28/22	DPH



NOTES:

- 1) MOST MOTORS ARE MULTIPLE VOLTAGE, VERIFY MOTOR INTERNAL CONNECTIONS ARE CORRECT FOR SUPPLY VOLTAGE.
- 2) FEEDER WIRE SIZE MUST BE CAPABLE OF CARRYING START-UP CURRENT LOAD AND CURRENT LOAD AT MAXIMUM PRESSURE.
- 3) PRESSURE SWITCH TO CONTROL COIL CIRCUIT, IF A MOTOR STARTER IS USED.
- 4) OTHER WIRING VARIATIONS ARE POSSIBLE. ALWAYS CONSULT LOCAL AND/OR BUILDING CODES FOR REQUIREMENTS.
- 5) - - - - - DASHED LINES INDICATE FIELD CONNECTIONS.

THIS DRAWING AND ALL OF ITS CONTENTS ARE THE SOLE PROPERTY OF GENERAL AIR PRODUCTS, INC. DETAILS MAY CHANGE WITHOUT NOTICE. THE CONTENTS OF THIS DRAWING, MAY NOT BE REPRODUCED OR INCORPORATED IN WHOLE OR IN PART IN ANY EQUIPMENT, NOR THE MANUFACTURE OF ANY PARTS, WITHOUT WRITTEN CONSENT OF GENERAL AIR PRODUCTS, INCORPORATED.

APPROVALS		DATE	TITLE
DRAWN	WLW	07/29/21	 WIRING INSTRUCTIONS 1Ø & 3Ø OIL LESS COMPRESSORS WITH DIGITAL PRESSURE SWITCH
CHECKED	DPH	07/29/21	
SCALE	NONE	SZE	
SHEET	1 OF 1	B	
DWG NO.	E-221188	REV 1	