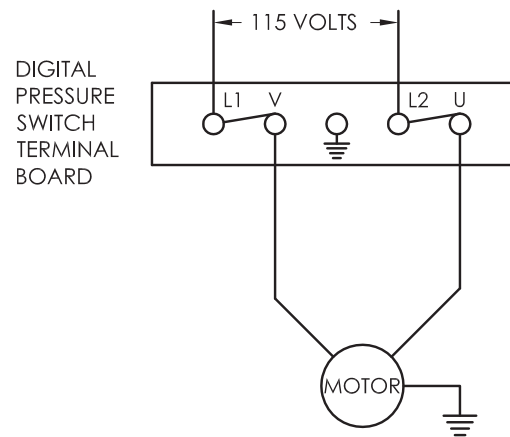



FOR 115V, 1 PHASE, 60Hz  
PRESSURE SWITCH ONLY



NOTES:

- 1) FEEDER WIRE SIZE MUST BE CAPABLE OF CARRYING START-UP CURRENT LOAD AND CURRENT LOAD AT MAXIMUM PRESSURE.

THE DRAWING AND ALL OF ITS CONTENTS  
ARE THE SOLE PROPERTY OF GENERAL AIR  
PRODUCTS, INC. DETAILS MAY CHANGE WITHOUT  
NOTICE. THE CONTENTS OF THIS DRAWING  
MAY NOT BE REPRODUCED OR INCORPORATED  
IN WHOLE OR IN PART IN ANY EQUIPMENT,  
NOR THE MANUFACTURE OF ANY PARTS,  
WITHOUT WRITTEN CONSENT OF GENERAL AIR  
PRODUCTS, INCORPORATED.

		<b>GENERAL</b> <i>AIR PRODUCTS</i>	
APPROVALS	DATE	TITLE	
DRAWN WLW	09/26/22	WIRING INSTRUCTIONS 1PHASE, 50Hz & 60Hz QUIET COMPRESSORS WITH DIGITAL PRESSURE SWITCH	
CHECKED DPH	09/26/22		
SCALE NONE	SZS		
SHEET 1 OF 1	B		
DWG NO.			
E-222267		REV 0	