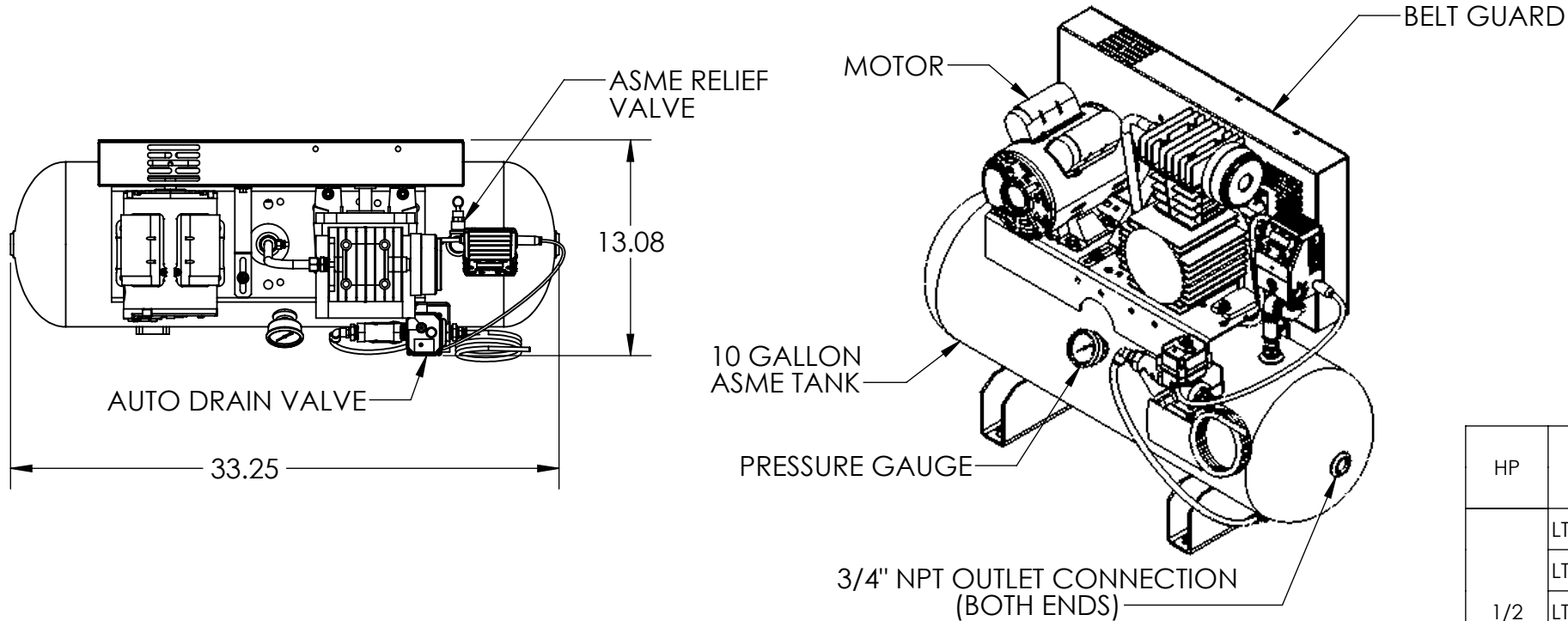


| REVISIONS | | | | |
|-----------|-----|---------------------------------|----------|----------|
| ECO | REV | DESCRIPTION | DATE | APPROVED |
| 0613 | 0 | RELEASE OF DRAWING | 11/19/21 | CJO |
| | 1 | DELETE HP MODELS | 06/23/22 | DPH |
| 0711 | 2 | CHANGE MODEL NUMBERS | 05/08/23 | SSN |
| 0704 | 3 | CHANGE RELIEF VALVE TO 150 PSIG | 05/15/23 | SSN |

B

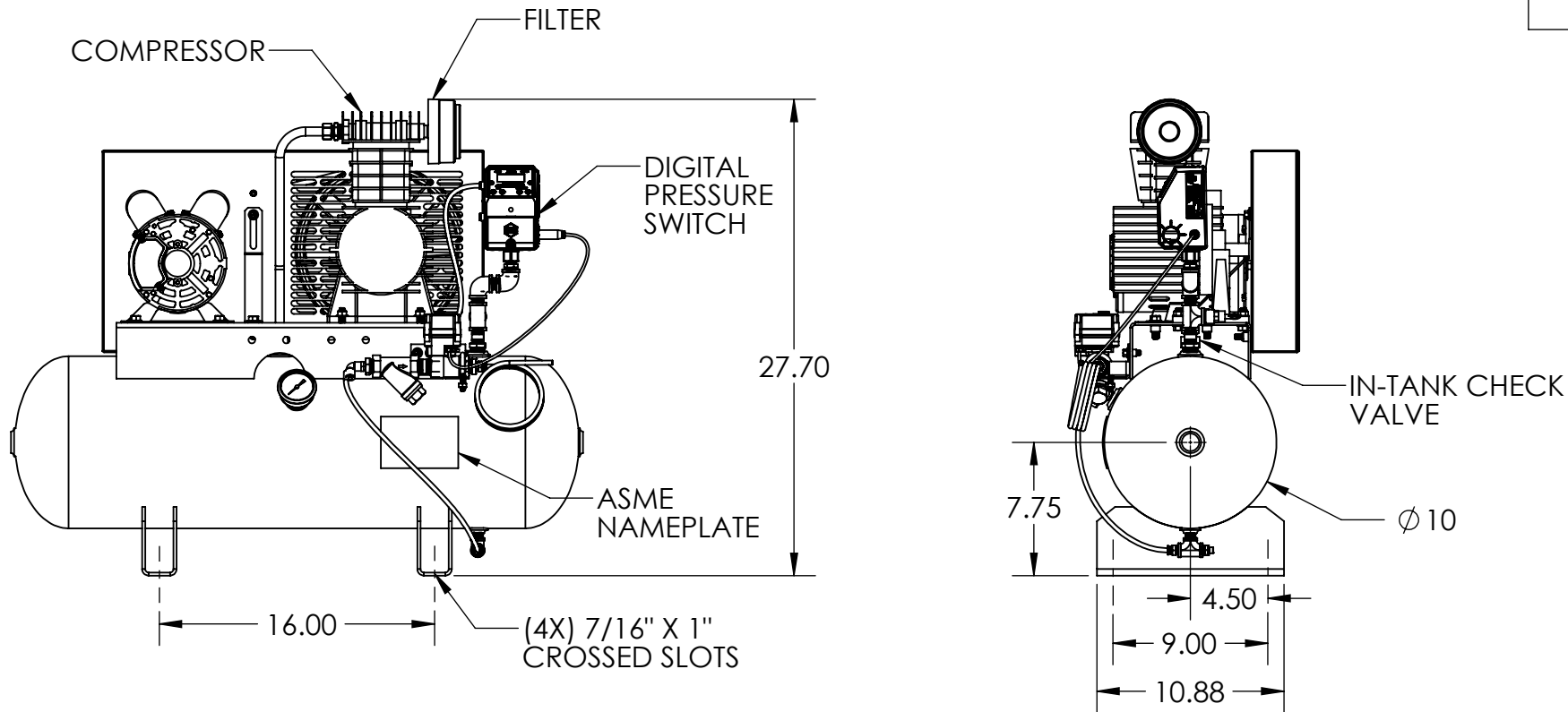
B



| HP | MODEL # | VOLTAGE | PRESSURE SWITCH SETTINGS | | RELIEF VALVE |
|-----|--------------|-----------------------|--------------------------|---------|--------------|
| | | | ON | OFF | |
| 1/2 | LTV22050A | 115/208-230V/1PH/60Hz | 45 PSIG | 60 PSIG | 150 PSIG |
| | LTV22050B | 208-230/460V/3PH/60Hz | | | |
| | LTV22050B-5 | 575V/3PH/60Hz | | | |
| | LTV22050A-50 | 220-240V/1PH/50Hz | | | |
| | LTV22050B-50 | 190/380V/3PH/50Hz | | | |

A

A



UNLESS OTHERWISE SPECIFIED
DIMENSIONS ARE IN INCHES
TOLERANCES ARE:

| | | |
|-----------|----------|--------|
| FRACTIONS | DECIMALS | ANGLES |
| ±1 | .xx±1.00 | ±x° |

THIS DRAWING AND ALL OF ITS CONTENTS ARE THE SOLE
PROPERTY OF GENERAL AIR PRODUCTS, INC. DETAILS
MAY CHANGE WITHOUT NOTICE. THE CONTENTS OF THIS
DRAWING MAY NOT BE REPRODUCED OR INCORPORATED
IN WHOLE OR IN PART IN ANY EQUIPMENT, NOR THE
MANUFACTURE OF ANY PARTS, WITHOUT WRITTEN
CONSENT OF GENERAL AIR PRODUCTS, INCORPORATED.



| APPROVALS | DATE | TITLE: | |
|-----------------|-----------|--|----------|
| DRAWN WLW | 11/19/21 | GENERAL ARRANGEMENT LUBRICATED TANK MOUNT LTV22050 WITH DIGITAL PRESSURE SWITCH | |
| CHECKED CJO | 11/19/21 | | |
| SCALE NONE | SIZE B | DWG. NO. G-221241 | REV 3 |
| SHEET 1 OF 1 | | | |

4

3

2

1