

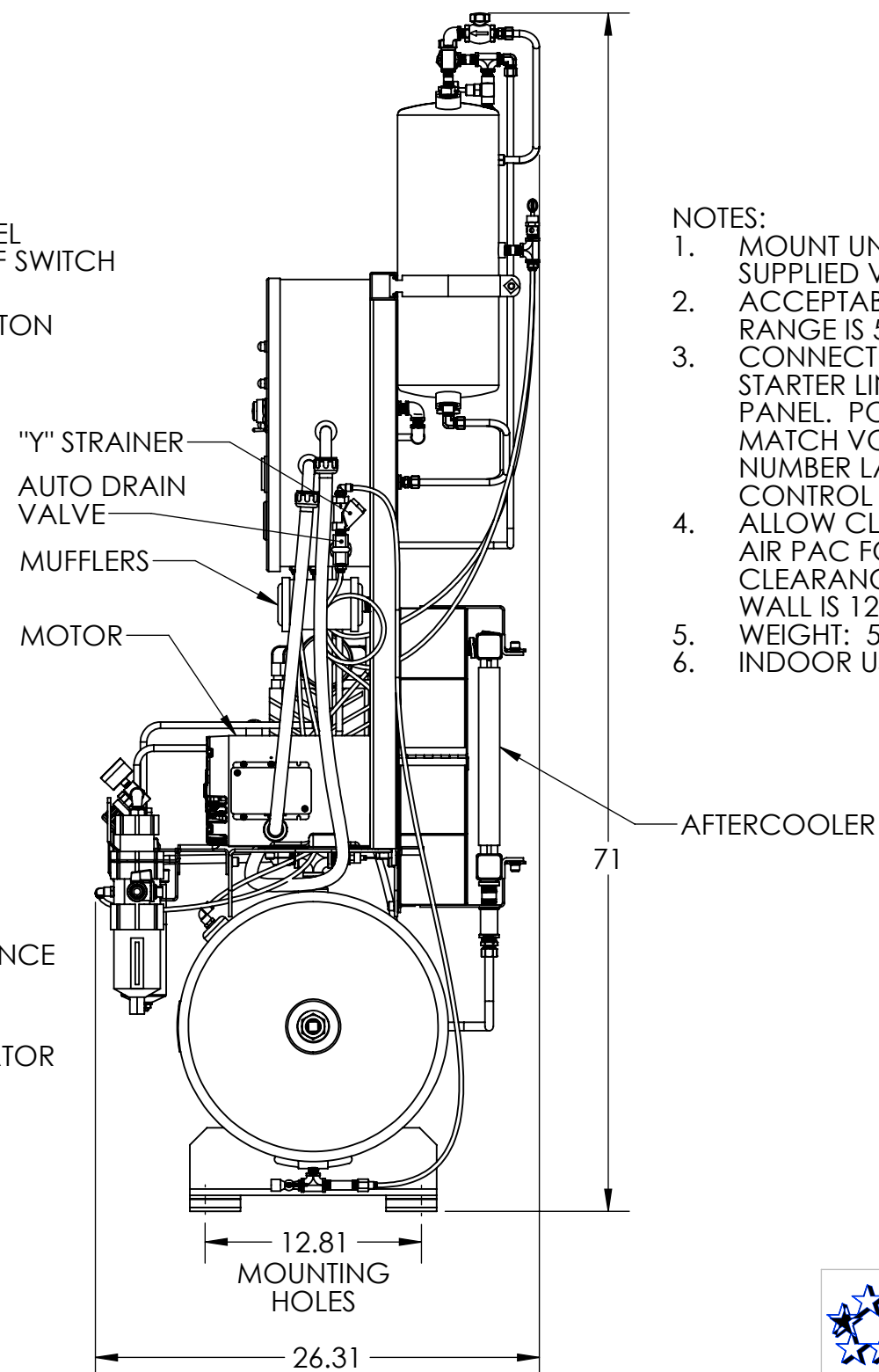
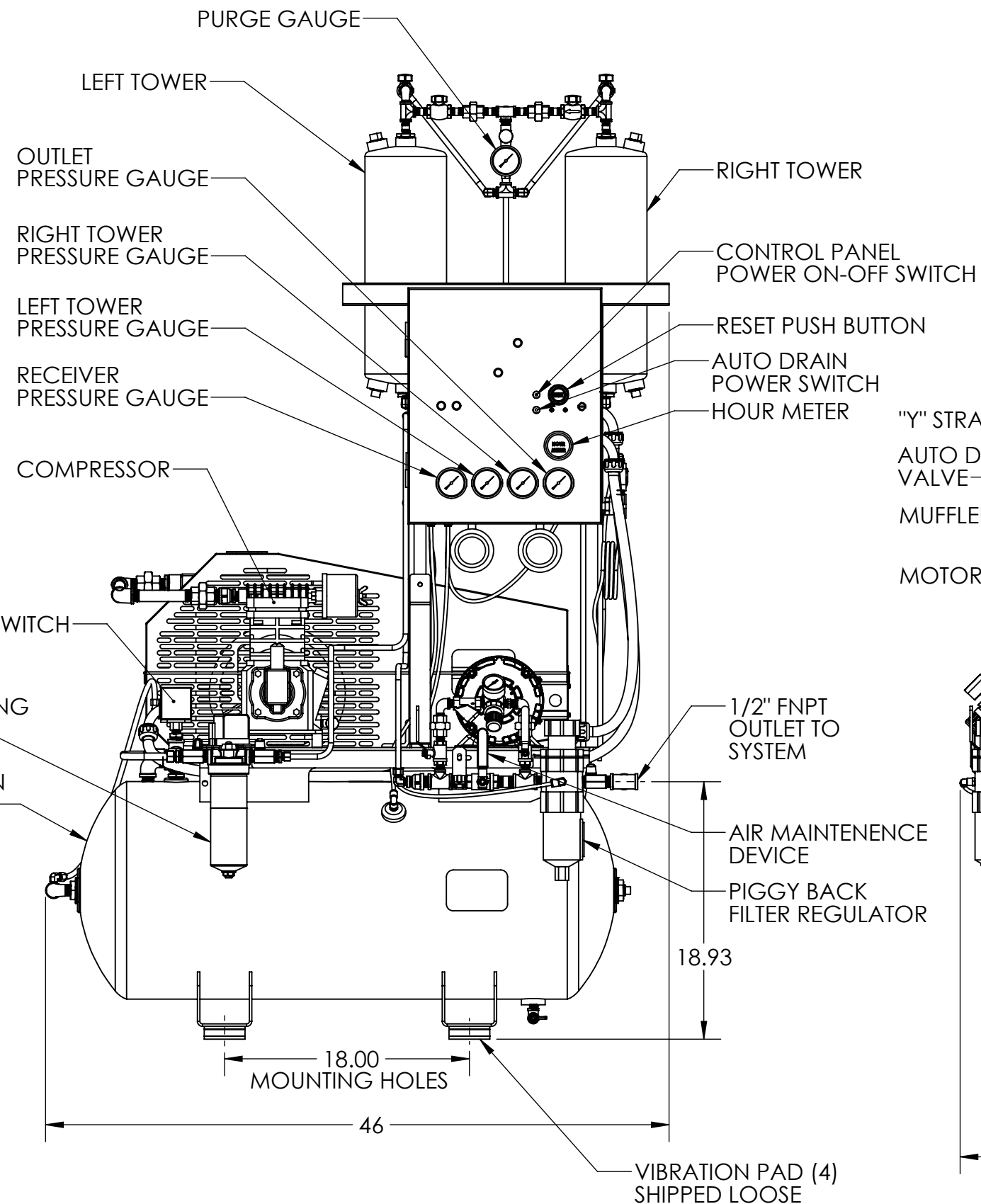
4

3

2

1

REVISIONS				
ECO	REV	DESCRIPTION	DATE	APPROVED
0634	1	ADD "Y" STRAINER	04/18/22	BLE



NOTES:

1. MOUNT UNIT TO A FIRM LEVEL BASE, USING SUPPLIED VIBRATION PADS.
2. ACCEPTABLE AMBIENT TEMPERATURE RANGE IS 50° F TO 100° F.
3. CONNECT CORRECT SUPPLY VOLTAGE TO STARTER LINE TERMINALS IN CONTROL PANEL. POWER SUPPLY VOLTAGE MUST MATCH VOLTAGE ON UNITS MODEL/SERIAL NUMBER LABEL ON THE INSIDE OF THE CONTROL PANEL DOOR.
4. ALLOW CLEARANCE ON ALL SIDES OF DRY AIR PAC FOR MAINTENANCE. MINIMUM CLEARANCE BETWEEN AFTERCOOLER AND WALL IS 12" FOR AIR FLOW.
5. WEIGHT: 500 LBS. SHIPPING, 450 LBS. NET.
6. INDOOR USE ONLY.



APPROVALS		DATE	TITLE:	
DRAWN	WLW	4/15/2022	GENERAL ARRANGEMENT DRY AIR PAC DAP500	
CHECKED	BLE	4/15/2022		
SCALE	NONE			
SHEET	1 OF 1		DWG. NO.	REV
			G-218078	1

UNLESS OTHERWISE SPECIFIED,
DIMENSIONS ARE IN INCHES.
TOLERANCES ARE:

FRACTIONS	DECIMALS	ANGLES
±1	.xx±1.0	±x°

THIS DRAWING AND ALL OF ITS CONTENTS ARE THE SOLE PROPERTY OF GENERAL AIR PRODUCTS, INC. DETAILS MAY CHANGE WITHOUT NOTICE. THE CONTENTS OF THIS DRAWING MAY NOT BE REPRODUCED OR INCORPORATED IN WHOLE OR IN PART IN ANY EQUIPMENT, NOR THE MANUFACTURE OF ANY PARTS, WITHOUT WRITTEN CONSENT OF GENERAL AIR PRODUCTS, INCORPORATED.