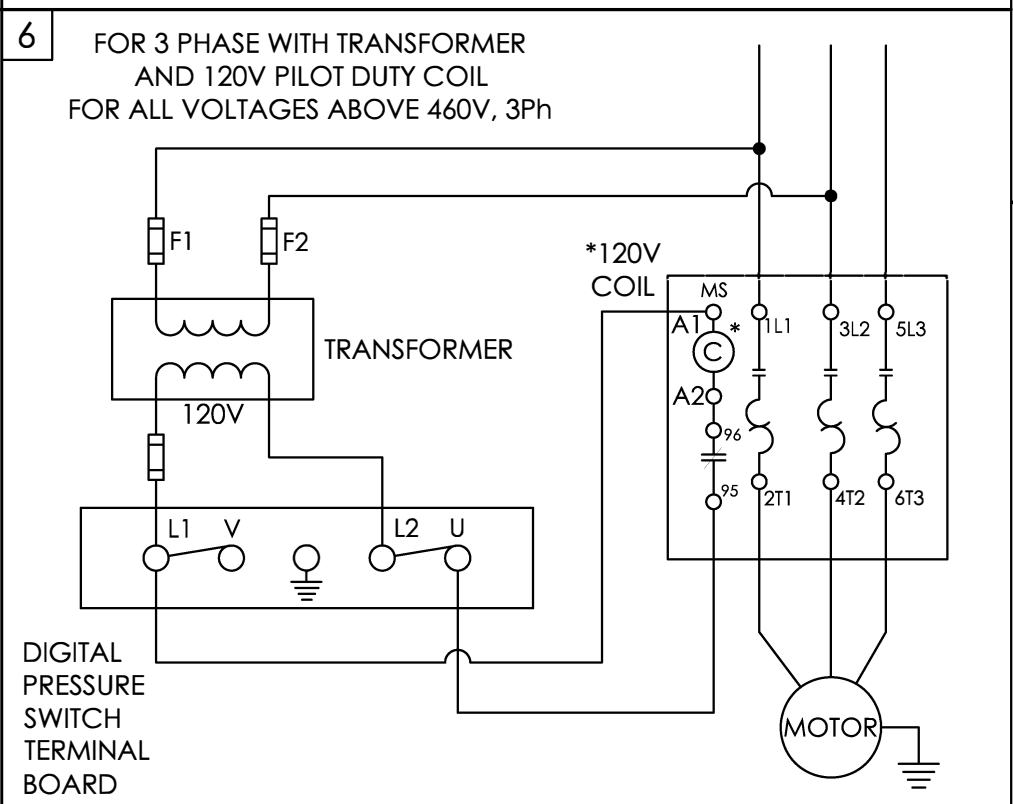
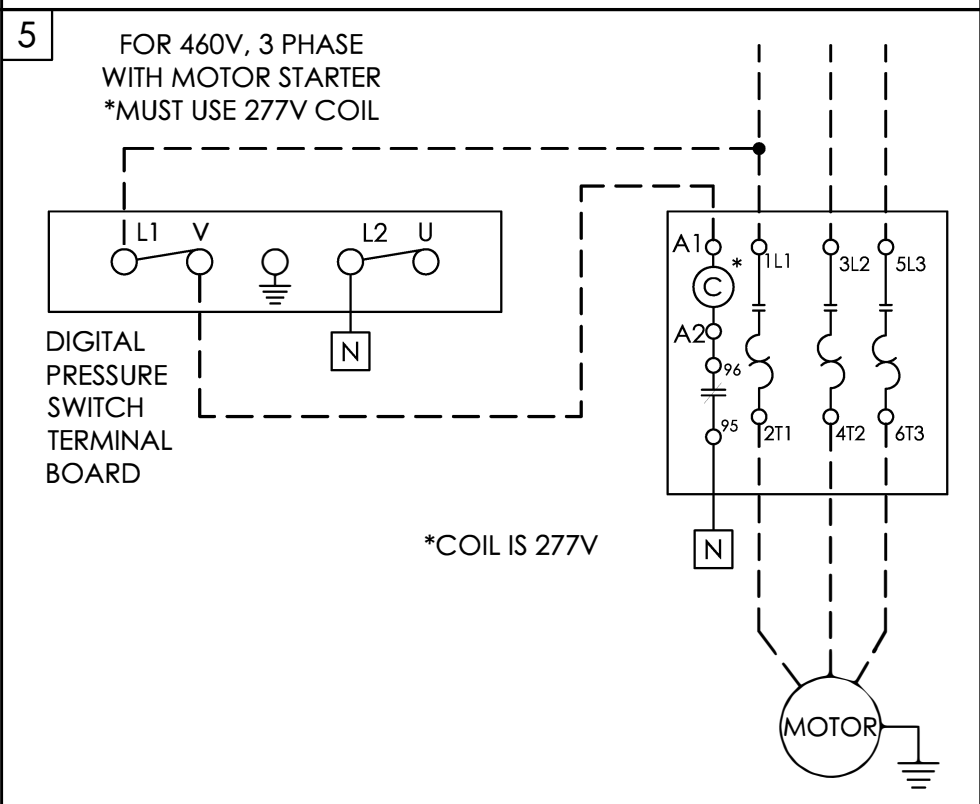
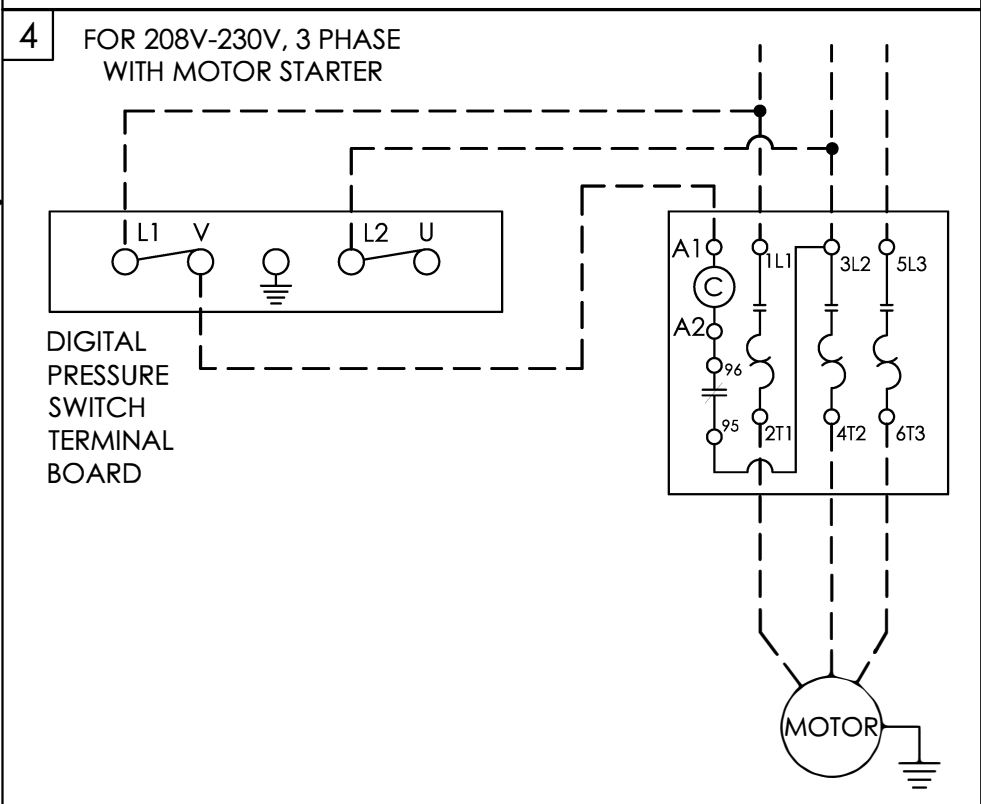


REVISIONS				
ECO	REV	DESCRIPTION	DATE	APPROVED
618	1	RELABELLED CONTACTOR	11/22/21	CJO
688	2	CHANGE GROUND TO NEUTRAL IN #5	11/29/22	SSN



- NOTES:**
- 1) MOST MOTORS ARE MULTIPLE VOLTAGE, VERIFY MOTOR INTERNAL CONNECTIONS ARE CORRECT FOR SUPPLY VOLTAGE.
 - 2) FEEDER WIRE SIZE MUST BE CAPABLE OF CARRYING START-UP CURRENT LOAD AND CURRENT LOAD AT MAXIMUM PRESSURE.
 - 3) PRESSURE SWITCH TO CONTROL COIL CIRCUIT, IF A MOTOR STARTER IS USED.
 - 4) OTHER WIRING VARIATIONS ARE POSSIBLE. ALWAYS CONSULT LOCAL AND/OR BUILDING CODES FOR REQUIREMENTS.
 - 5) - - - - - DASHED LINES INDICATE FIELD CONNECTIONS.

THIS DRAWING AND ALL OF ITS CONTENTS ARE THE SOLE PROPERTY OF GENERAL AIR PRODUCTS, INC. DETAILS MAY CHANGE WITHOUT NOTICE. THE CONTENTS OF THIS DRAWING, MAY NOT BE REPRODUCED OR INCORPORATED IN WHOLE OR IN PART IN ANY EQUIPMENT, NOR THE MANUFACTURE OF ANY PARTS, WITHOUT WRITTEN CONSENT OF GENERAL AIR PRODUCTS, INCORPORATED.

APPROVALS		DATE	TITLE
		DATE	
DRAWN	WLW	07/29/21	GENERAL AIR PRODUCTS WIRING INSTRUCTIONS 1Ø & 3Ø COMPRESSORS DIGITAL PRESSURE SWITCH
CHECKED	SSN	11/29/22	
SCALE	NONE	SIZE	
SHEET	1 OF 1	SIZE	
DWG NO. E-221276			REV 2