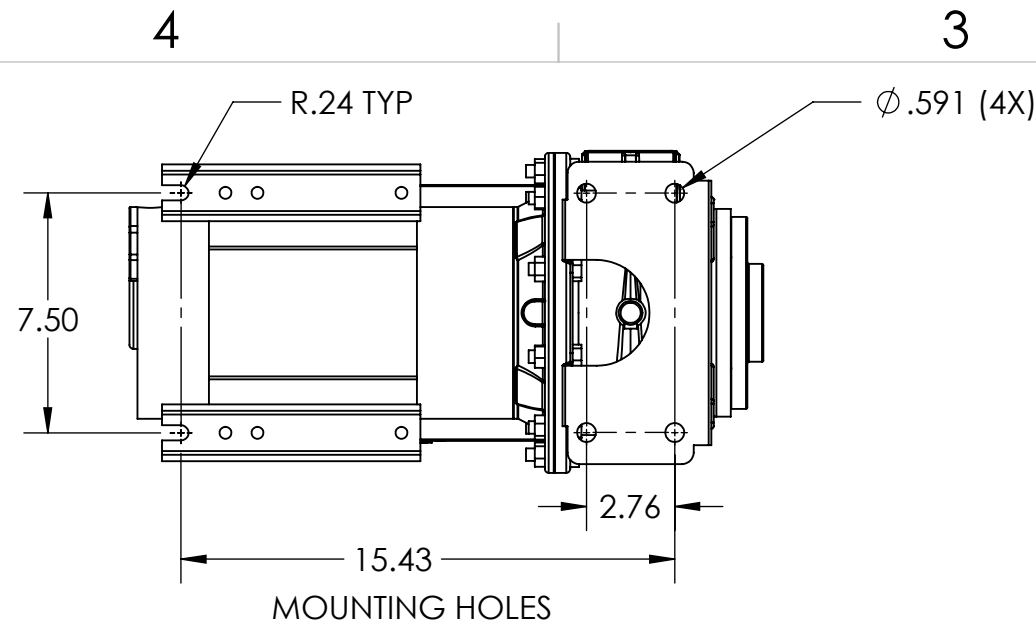


ECO		REV		DESCRIPTION		DATE	APPROVED
587	0	RELEASE OF DRAWING				06/29/21	CJO

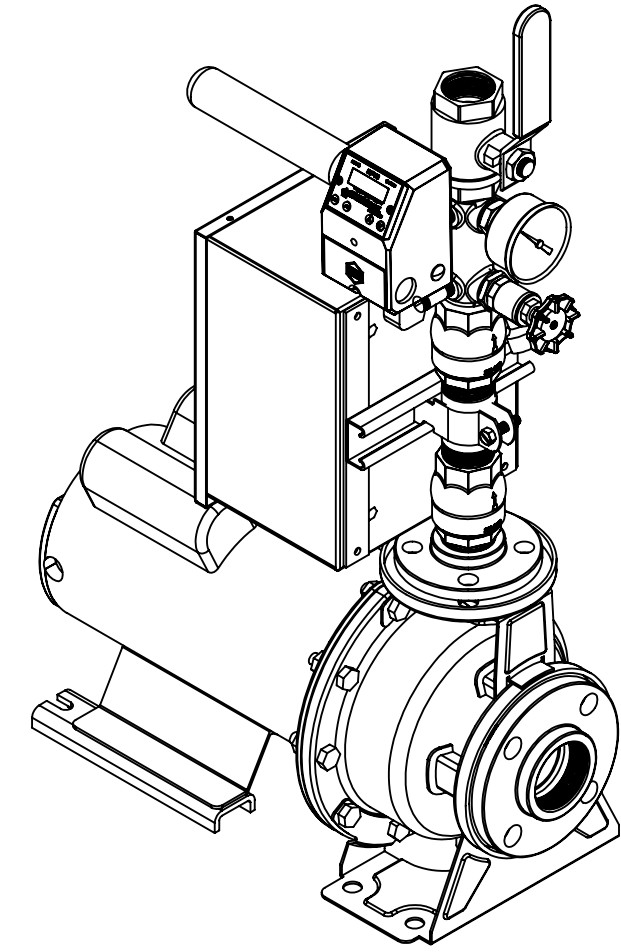
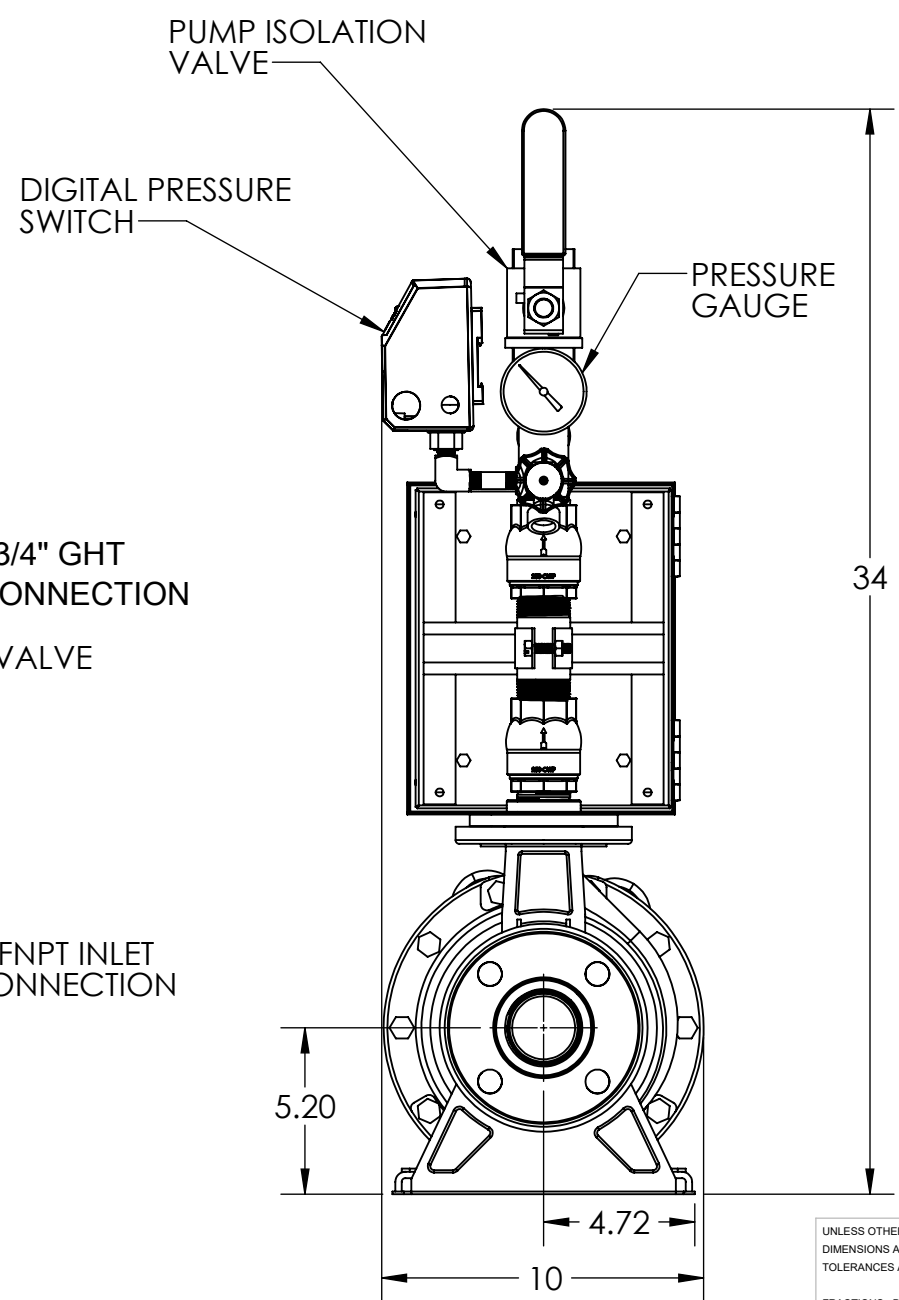
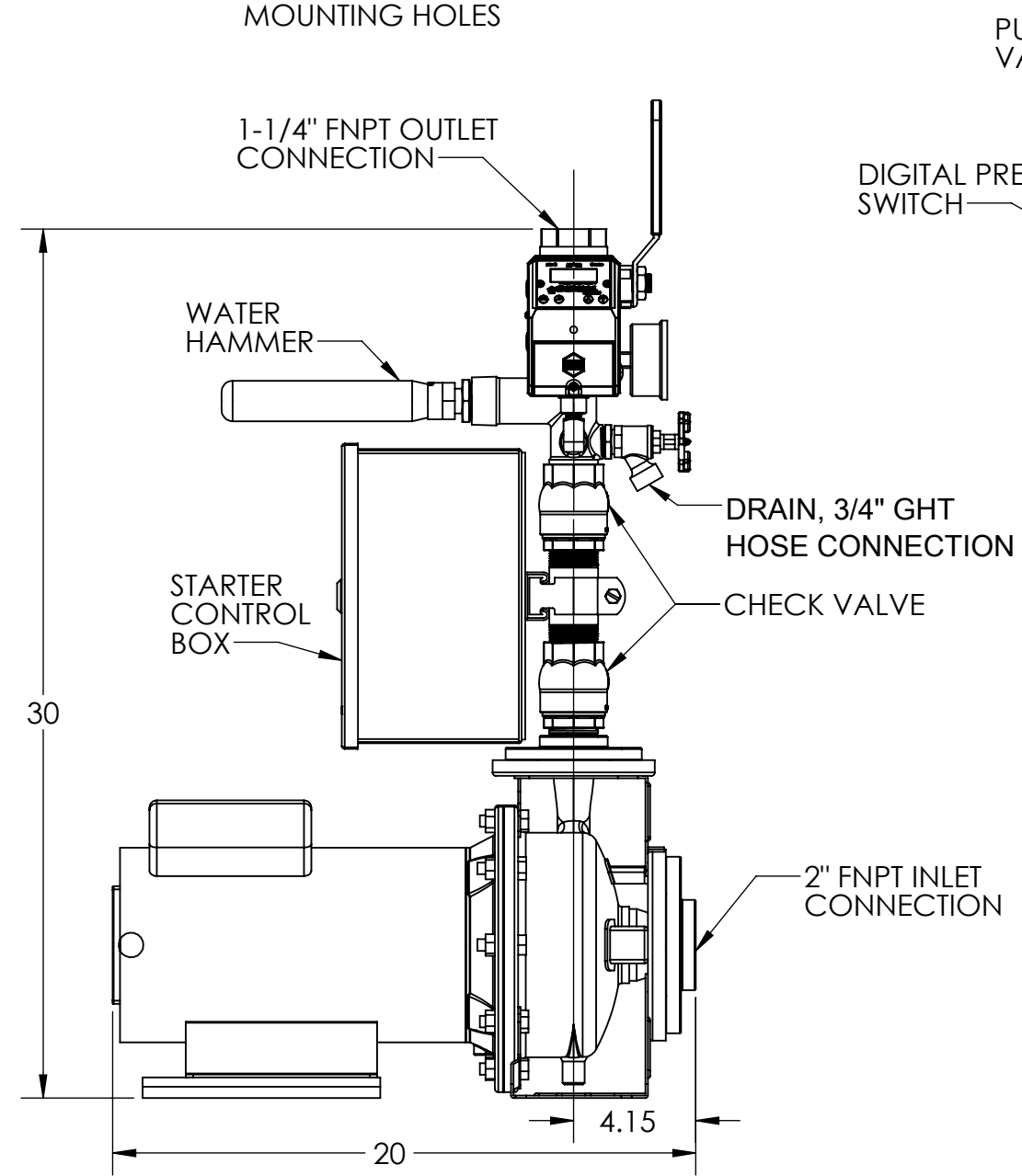
REVISIONS



NOTES:

1. REDUCING THE SUCTION CONNECTIONS TO THE PUMP IS NOT RECOMMENDED. REDUCING SUCTION PIPING MAY LOWER PUMP CAPACITY AND COULD RESULT IN CAVITATION. CAVITATION WILL DAMAGE THE PUMP.
2. OVERALL DIMENSIONS ARE FOR REFERENCE ONLY. DIMENSIONS ARE SUBJECT TO CHANGE.

INDOOR USE ONLY



N:\Work\Engineering\Drawing File\RESIDENTIAL PUMP SYSTEMS\ECONO (XPS)\GA\G-221170 GA XPS23E09-D1

UNLESS OTHERWISE SPECIFIED, DIMENSIONS ARE IN INCHES. TOLERANCES ARE:

FRACTIONS	DECIMALS	ANGLES
± 1	$.xx \pm 1.0$	$\pm x^\circ$

THIS DRAWING AND ALL OF ITS CONTENTS ARE THE SOLE PROPERTY OF GENERAL AIR PRODUCTS, INC. DETAILS MAY CHANGE WITHOUT NOTICE. THE CONTENTS OF THIS DRAWING MAY NOT BE REPRODUCED OR INCORPORATED IN WHOLE OR IN PART IN ANY EQUIPMENT, NOR THE MANUFACTURE OF ANY PARTS, WITHOUT WRITTEN CONSENT OF GENERAL AIR PRODUCTS, INCORPORATED.



APPROVALS	DATE	TITLE:
DRAWN WLW	06/29/21	GENERAL ARRANGEMENT RESIDENTIAL FIRE PROTECTION MODEL XPS23E09-D1
CHECKED CJO	06/29/21	
SCALE NONE	SIZE B	DWG. NO. G-221170
SHEET 1 OF 1		REV 0